

TIMBERON GOLF COURSE SUBDIVISION

UNIT - 2 CONTAINING 52.33 ACRES PORTION OF SECTIONS 26 & 27 T-19-S, R-12-E, N.M.P.M. OTERO COUNTY, NEW MEXICO

PROPERTY DESCRIPTION

BEING the description of a parcel of land to be known hereafter as Timberon Golf Course Subdivision, Unit 2, lying in and being a portion of Sections 26 and 27, Township 19 South, Range 12 East of the New Mexico Principal Meridian in Otero County, New Mexico and being more particularly described by metes and bounds as follows: BEGINNING at the corner common to Sections 22, 23, 26 and 27, Township 19 South, Range 12 East, New Mexico Principal Meridian, Otero County, New Mexico; thence East a distance of 1.99 feet to a point lying on the westerly boundary line of Timberon Golf Course Subdivision Unit 1; thence South along the westerly boundary line of Timberon Golf Course Subdivision, Unit 1 a distance of 606.98 feet to a point; thence continuing along the westerly boundary line of Timberon Golf Course Subdivision, Unit 1 South 05° 30' 12" West a distance of 260.47 feet to a point; thence continuing along the westerly boundary line of Timberon Golf Course Subdivision, Unit 1 South 27° 59' 29" West a distance of 191.04 feet to a point lying on the Northerly right of way line of Eldrado Drive, that point being the Point of Beginning of the parcel being described; THENCE across Eldrado Drive South 27° 59' 29" West a distance of 50.00 feet to a point lying in the Southerly right of way line of Eldrado Drive; THENCE along the Southerly right of way line of Eldrado Drive South 62° 00' 31" East a distance of 590.27 feet to a point; THENCE a distance of 31.41 feet along the arc of a curve to the right whose central angle is 90° 00', whose radius is 20.00 feet and whose long chord bears South 17° 00' 31" East a distance of 28.28 feet to a point lying in the Westerly right of way line of Edgewood Road; THENCE along the Westerly right of way line of Edgewood Road South 27° 59' 29" West a distance of 32.20 feet to a point; THENCE continuing along the Westerly right of way line of Edgewood Road a distance of 371.54 feet along the arc of a curve to the right whose central angle is 35° 34' 50", whose radius is 598.29 feet and whose long chord bears South 45° 46' 54" West a distance of 365.60 feet to a point; THENCE continuing along the Westerly right of way line of Edgewood Road South 63° 34' 19" West a distance of 385.68 feet to a point; THENCE continuing along the Westerly right of way line of Edgewood Road a distance of 401.49 feet along the arc of a curve to the left whose central angle is 38° 53' 19", whose radius is 591.53 feet and whose long chord bears South 44° 07' 40" West a distance of 393.83 feet to a point, that point being the most northeasterly corner of the most Southerly portion of Block 8, Timberon Golf Course Subdivision, Unit 2; THENCE continuing along the Westerly right of way line of Edgewood Road South 24° 41' West a distance of 724.65 feet to a point; THENCE continuing along the Westerly right of way line of Edgewood Road a distance of 174.07 feet along the arc of a curve to the right whose central angle is 40° 20', whose radius is 247.28 feet and whose long chord bears South 44° 51' West a distance of 170.50 feet to a point; THENCE continuing along the Westerly right of way line of Edgewood Road South 65° 01' West a distance of 46.85 feet to a point; THENCE continuing along the Westerly right of way line of Edgewood Road a distance of 207.22 feet along the arc of a curve to the left whose central angle is 22° 23' 19", whose radius is 530.30 feet and whose long chord bears South 53° 49' 21" West a distance of 205.90 feet to a point; THENCE continuing along the Westerly right of way line of Edgewood Road South 42° 37' 41" West a distance of 50.00 feet to a point, that point being the most Southeasterly corner of the most Southerly portion of Block 8, Timberon Golf Course Subdivision, Unit 2; THENCE North 47° 22' 19" West a distance of 220.00 feet to a point; THENCE North 42° 37' 41" East a distance of 50.00 feet to a point; THENCE South 81° 21' 35" East a distance of 185.90 feet to a point; THENCE North 24° 41' 00" East a distance of 516.73 feet to a point; THENCE North 38° 15' 30" East a distance of 298.33 feet to a point; THENCE North 54° 30' 44" East a distance of 201.00 feet to a point; THENCE South 65° 19' 00" East a distance of 50.00 feet to the most Northeasterly corner of the most Southerly portion of Block 8, Timberon Golf Course Subdivision, Unit 2; THENCE along the Westerly right of way line of Edgewood Road a distance of 401.49 feet along the arc of a curve to the right whose central angle is 38° 53' 19", whose radius is 591.53 feet and whose long chord bears North 44° 07' 40" East a distance of 393.83 feet to a point; THENCE North 63° 34' 19" East continuing along the Westerly right of way line of Edgewood Road a distance of 151.00 feet to the most Southerly corner of the most Northeasterly portion of Block 8, Timberon Golf Course Subdivision, Unit 2; THENCE North 26° 25' 41" West a distance of 160.00 feet to a point; THENCE North 16° 01' 43" East a distance of 151.37 feet to a point; THENCE North 27° 59' 29" East a distance of 175.00 feet to a point; THENCE North 41° 41' 21" West a distance of 100.00 feet to a point; THENCE North 9° 55' 54" West a distance of 89.09 feet to a point; THENCE North 27° 59' 29" East a distance of 70.00 feet to a point on the Southerly right of way line of Eldrado Drive, that point also being the most Northwesterly corner of the most Northeasterly portion of Block 8, Timberon Golf Course Subdivision, Unit 2; THENCE continuing along the Southerly right of way line of Eldrado Drive North 62° 00' 31" West a distance of 100.00 feet to a point, that point being the most Northeasterly corner of the most Westerly portion of Block 8, Timberon Golf Course Subdivision, Unit 2; THENCE South 27° 59' 29" West a distance of 110.00 feet to a point; THENCE South 77° 16' 47" West a distance of 95.67 feet to a point; THENCE South 40° 50' 15" West a distance of 98.12 feet to a point; THENCE South 28° 00' 00" West a distance of 410.26 feet to a point; THENCE South 22° 30' 27" West a distance of 499.51 feet to a point; THENCE South 40° 10' 56" West a distance of 164.22 feet to a point; THENCE North 59° 33' 24" West a distance of 80.00 feet to a point, that point being in the Southeasterly right of way line of Eldrado Drive and also being the most Southwesterly corner of the most Westerly portion of Block 8, Timberon Golf Course Subdivision, Unit 2; THENCE continuing along the Southeasterly right of way line of Eldrado Drive a distance of 278.44 feet along the arc of a curve to the right whose central angle is 65° 16' 24", whose radius is 244.41 feet and whose long chord bears South 63° 04' 48" West a distance of 263.63 feet to a point; THENCE continuing along the Southerly right of way line of Eldrado Drive North 84° 17' West a distance of 590.00 feet to a point; THENCE continuing along the Southerly right of way line of Eldrado Drive a distance of 403.35 feet along the arc of a curve to the right whose central angle is 10° 00', whose radius is 2311.01 feet and whose long chord bears North 79° 17' West a distance of 402.84 feet to a point;

THENCE across Eldrado Drive North 15° 43' East a distance of 50.00 feet to a point on the Northerly right of way line of Eldrado Drive, that point being the most Southwesterly corner of the West portion of Block 6, Timberon Golf Course Subdivision, Unit 2; THENCE North 34° 19' 01" East a distance of 182.98 feet to a point; THENCE South 84° 17' East a distance of 85.00 feet to a point; THENCE North 10° 43' 19" East a distance of 83.08 feet to a point; THENCE North 01° 52' East a distance of 800.00 feet to a point; THENCE North 17° 16' 10" East a distance of 331.88 feet to a point; THENCE North 13° 08' 30" West a distance of 472.83 feet to a point, that point being the most Northwesterly corner of the Westerly portion of Block 6, Timberon Golf Course Subdivision, Unit 2; THENCE North 50° 52' East a distance of 170.00 feet to a point; THENCE South 65° 07' 30" East a distance of 472.83 feet to a point; THENCE South 39° 08' East a distance of 173.21 feet to a point; THENCE South 71° 32' East a distance of 268.61 feet to a point; THENCE South 39° 08' East a distance of 55.00 feet to a point; THENCE South 50° 52' West a distance of 416.13 feet to a point; THENCE South 33° 37' 30" West a distance of 213.35 feet to a point; THENCE South 01° 52' West a distance of 800.00 feet to a point; THENCE South 03° 47' 30" West a distance of 117.70 feet to a point; THENCE South 84° 17' East a distance of 85.00 feet to a point; THENCE South 12° 43' 06" East a distance of 205.55 feet to a point, that point being on the Northerly right of way line of Eldrado Drive; THENCE continuing along the Northerly right of way line of Eldrado Drive South 84° 17' East a distance of 140.00 feet to a point, that point being the Southerly corner of the Eastern portion of Block 6, Timberon Golf Course Subdivision, Unit 2; THENCE North 25° 54' 03" East a distance of 200.30 feet to a point; THENCE North 11° 01' East a distance of 375.00 feet to a point; THENCE North 06° 04' 50" West a distance of 118.90 feet to a point; THENCE North 11° 01' East a distance of 310.54 feet to a point; THENCE North 23° 59' 40" East a distance of 104.43 feet to a point; THENCE North 38° 02' East a distance of 572.18 feet to a point; THENCE North 62° 48' 25" East a distance of 39.28 feet to a point; THENCE North 83° 41' 29" East a distance of 173.79 feet to a point; THENCE South 62° 00' 31" East a distance of 115.00 feet to a point; THENCE South 08° 25' 52" East a distance of 93.21 feet to a point; THENCE South 27° 59' 29" West a distance of 125.00 feet to a point, that point being on the Northerly right of way line of Eldrado Drive; THENCE continuing along the Northerly right of way line of Eldrado Drive South 62° 00' 31" East a distance of 225.00 feet to the Point of Beginning of the parcel being described and containing 52.313 acres more or less.

STATE OF NEW MEXICO ) ss. COUNTY OF OTERO ) RUTH ROBERTS, County Clerk do hereby certify the foregoing to be a true and correct copy of the original filed in my office the 1st day of May, 1972, in Plat Book 15 Page 19-22. WITNESS my hand and the seal of my said office this 1st day of May, 1972. Ruth Roberts County Clerk Elizabeth West Deputy

DEDICATION

STATE OF NEW MEXICO COUNTY OF OTERO This is to certify that the above Plat of Blocks 6, 8 and 9, Unit 2, Timberon Golf Course Subdivision, a Subdivision in Otero County, New Mexico, is made with the free consent and in accordance with the desires of the undersigned owners and proprietors thereof who by the filing of this Plat do hereby dedicate to the use of the public the Roadways, Parking Areas, Parks and Utility Easements shown thereon. in witness whereof said owners and proprietors have set their hands and seals this 31st day of APRIL 1972. North American Land Developments Inc. By: Johnny F. Mobley Vice President, Johnny F. Mobley Attest: Richard A. Parsons Ass't. Secretary-Treasurer, Richard A. Parsons

ACKNOWLEDGEMENT

STATE OF NEW MEXICO COUNTY OF LINCOLN The foregoing instrument was acknowledged before me by Johnny F. Mobley and Richard A. Parson, being the Vice President and Assistant Secretary-Treasurer respectively of North American Land Development Inc., on behalf of said Inc., on this 31st day of APRIL 1972. My Commission Expires 1-26-76 Notary Public

FILING

STATE OF NEW MEXICO COUNTY OF OTERO Filed for Record in the Office of the County Clerk and Recorder of the County of Otero, New Mexico at 10:20 o'clock A.M., this 1st day of May 1972. By: Elizabeth West Deputy County Clerk Ruth Roberts Reception No. 28650 BK. 15 Pg. 19-22

APPROVAL

STATE OF NEW MEXICO COUNTY OF OTERO This Plat of Blocks 6, 8 and 9, Unit 2, Timberon Golf Course Subdivision was approved by the Otero County Commission on this day of 1972. Chairman: Clayton G. McDonald Attest: Ruth Roberts County Clerk Frankles Dean Deputy

This Subdivision lies within the platting and planning jurisdiction of: Governmental Unit: Land Surveyor: Developer: Restrictive covenants applicable to this subdivision are recorded in Book 384, Page 33-36 of the records of Otero County. Approved this 16th day of APRIL 1972, John E. King County Surveyor N.M. REG. No. 1553 Approved this day of 1972, County Sanitarian Approved this 4 day of April 1972, Robert R. Bell Chairman, Otero County Planning Commission

CERTIFICATE

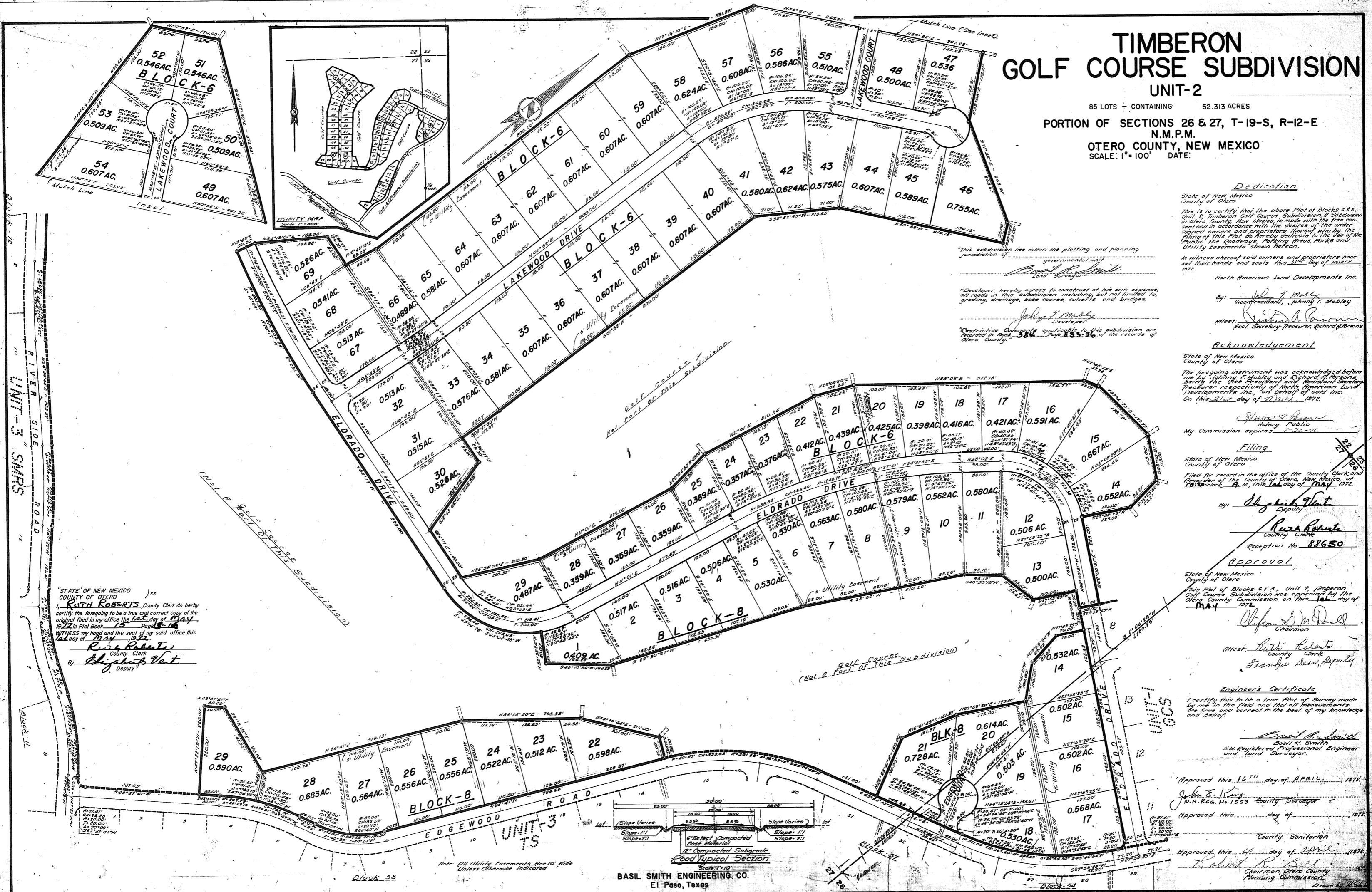
I certify that this is a true metes and bounds description of Timberon Golf Course Subdivision, Unit 2. Basil R. Smith New Mexico Registered Professional Engineer and Land Surveyor

TIMBERON GOLF COURSE #2 BK 15 PG 19-22 PG 19-20 1 OF 2

# TIMBERON GOLF COURSE SUBDIVISION UNIT-2

85 LOTS - CONTAINING 52.313 ACRES

PORTION OF SECTIONS 26 & 27, T-19-S, R-12-E  
N.M.P.M.  
OTERO COUNTY, NEW MEXICO  
SCALE: 1" = 100' DATE:



**Dedication**  
State of New Mexico  
County of Otero  
This is to certify that the above Plot of Blocks 6 & 8, Unit 2, Timberon Golf Course Subdivision, is made with the free consent and in accordance with the desires of the undersigned owners and proprietors thereof who by the filing of this Plat do hereby dedicate to the use of the public the Roadways, Parking Areas, Parks and Utility Easements shown hereon.  
In witness whereof said owners and proprietors have set their hands and seals this 31st day of March 1972.

This subdivision lies within the planning and planning jurisdiction of  
*Richard G. Parsons*  
Local Surveyor  
"Developer hereby agrees to construct at his own expense, all roads in this subdivision including, but not limited to, grading, drainage, base courses, curbs and bridges."  
*John F. Mobley*  
Developer  
"Restrictive Covenants applicable to this subdivision are recited in Book 384, Page 153-36 of the records of Otero County."

North American Land Developments Inc.  
By: *John F. Mobley*  
Vice-President, Johnny F. Mobley  
Attest: *Richard G. Parsons*  
Real Secretary, Treasurer, Richard Parsons

**Acknowledgement**  
State of New Mexico  
County of Otero  
The foregoing instrument was acknowledged before me by Johnny F. Mobley and Richard G. Parsons, being the Vice-President and Real Secretary, Treasurer respectively of North American Land Developments Inc., on behalf of said Inc. on this 31st day of March, 1972.

*Shirley S. Parsons*  
Notary Public  
My Commission expires 1-26-76

**Filing**  
State of New Mexico  
County of Otero  
Filed for record in the office of the County Clerk and Recorder of the County of Otero, New Mexico, of Block A.M. this 1st day of May 1972.

By: *Elizabeth Vent*  
Deputy  
*Ruth Roberts*  
County Clerk  
Reception No. 88650

**Approval**  
State of New Mexico  
County of Otero  
This Plat of Blocks 6 & 8, Unit 2, Timberon Golf Course Subdivision was approved by the Otero County Commission on this 1st day of May 1972.

*Clifford M. Donald*  
Chairman  
Attest: *Ruth Roberts*  
County Clerk  
*Frankie Dean*, Deputy

**Engineer's Certificate**  
I certify this to be a true Plat of Survey made by me in the field and that all measurements are true and correct to the best of my knowledge and belief.  
*Basil R. Smith*  
Basil R. Smith  
N.M. Registered Professional Engineer and Land Surveyor.

Approved this 16th day of April 1972  
*John E. King*  
N.M. Reg. No. 1553 County Surveyor  
Approved this day of April 1972  
County Sanitarian  
Approved this day of April 1972  
*Robert R. Bell*  
Chairman, Otero County Planning Commission  
Drawn by *W. Smith*

"STATE OF NEW MEXICO  
COUNTY OF OTERO  
I, *Ruth Roberts*, County Clerk do hereby certify the foregoing to be a true and correct copy of the original filed in my office this 1st day of May 1972 in Plat Book 15, Page 1-16.  
WITNESS my hand and the seal of my said office this 1st day of May 1972.  
*Ruth Roberts*  
County Clerk  
By: *Elizabeth Vent*  
Deputy

BASIL SMITH ENGINEERING CO.  
El Paso, Texas

39

39