

# TIMBERON SUBDIVISION UNIT - 17

PORTION OF SECTIONS 13 and 24  
T-19-S, R-12-E, N.M.P.M.  
OTERO COUNTY, NEW MEXICO  
Scale: 1"=200' February 27, 1985  
586 Lots — Containing 395.888 Acres

### DEDICATION

State of New Mexico  
County of Otero  
This is to certify that the above Plat of Blocks 103, 173, 174, 175, 177, 178, 179, 180, 181, 182, 183, 184, 185, 186, 187, 188 and 189, Unit 17, Timberon Subdivision, a Subdivision in Otero County, New Mexico, is made with the free consent and in accordance with the desires of the undersigned owners and proprietors, thereof, who by the filing of this Plat do hereby dedicate to the use of the Public, the roadways, parks, parking areas and utility easements as shown hereon.  
In witness whereof said owners and proprietors have set their hands and seals this 13<sup>th</sup> day of May, 1985.

North American Land Developments, Inc.

By: John F. Mobley President  
Attest: Nancy S. Mobley Assistant Secretary-Treasurer

### ACKNOWLEDGEMENT

State of New Mexico  
County of Otero  
The foregoing instrument acknowledged before me by John F. Mobley and Nancy S. Mobley, being the President and Assistant Secretary-Treasurer respectively, of North American Land Developments, Inc., in behalf of said Inc., on this 13<sup>th</sup> day of May, 1985.

Signature: Kim J. Javelin  
Notary Public - New Mexico  
My Commission Expires 8-6-88

State of New Mexico  
County of Otero  
Filed for record in the office of the County Clerk and Recorder of the County of Otero, New Mexico, at 11:50 A.M., this 20<sup>th</sup> day of May, 1985.

By: Karen Juwi Deputy  
Andrew C. Wyzant County Clerk

Reception No. 0850  
Book 33  
Page 14-27

State of New Mexico  
County of Otero  
This Plat of Blocks 103, 173, 174, 175, 177, 178, 179, 180, 181, 182, 183, 184, 185, 186, 187, 188 and 189, Unit 17, Timberon Subdivision was approved by the Otero Commission on this 13<sup>th</sup> day of May, 1985.

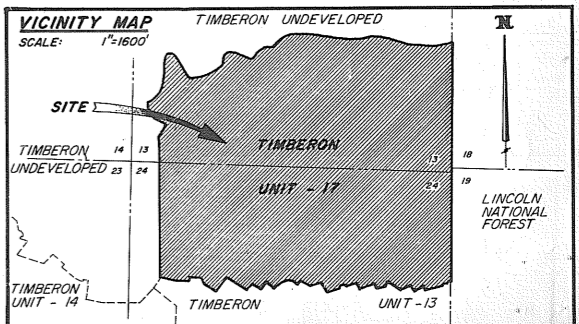
Attest: William S. Yage  
County Clerk

Engineers Certificate  
I, Basil R. Smith, Registered Professional Civil Engineer and Land Surveyor, certify this to be a true Plat of Survey made by me or under my supervision in the field and that all measurements are true and correct to the best of my knowledge and belief.

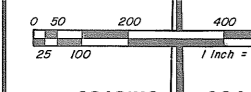
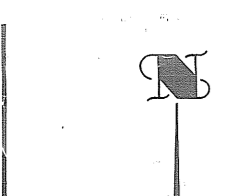
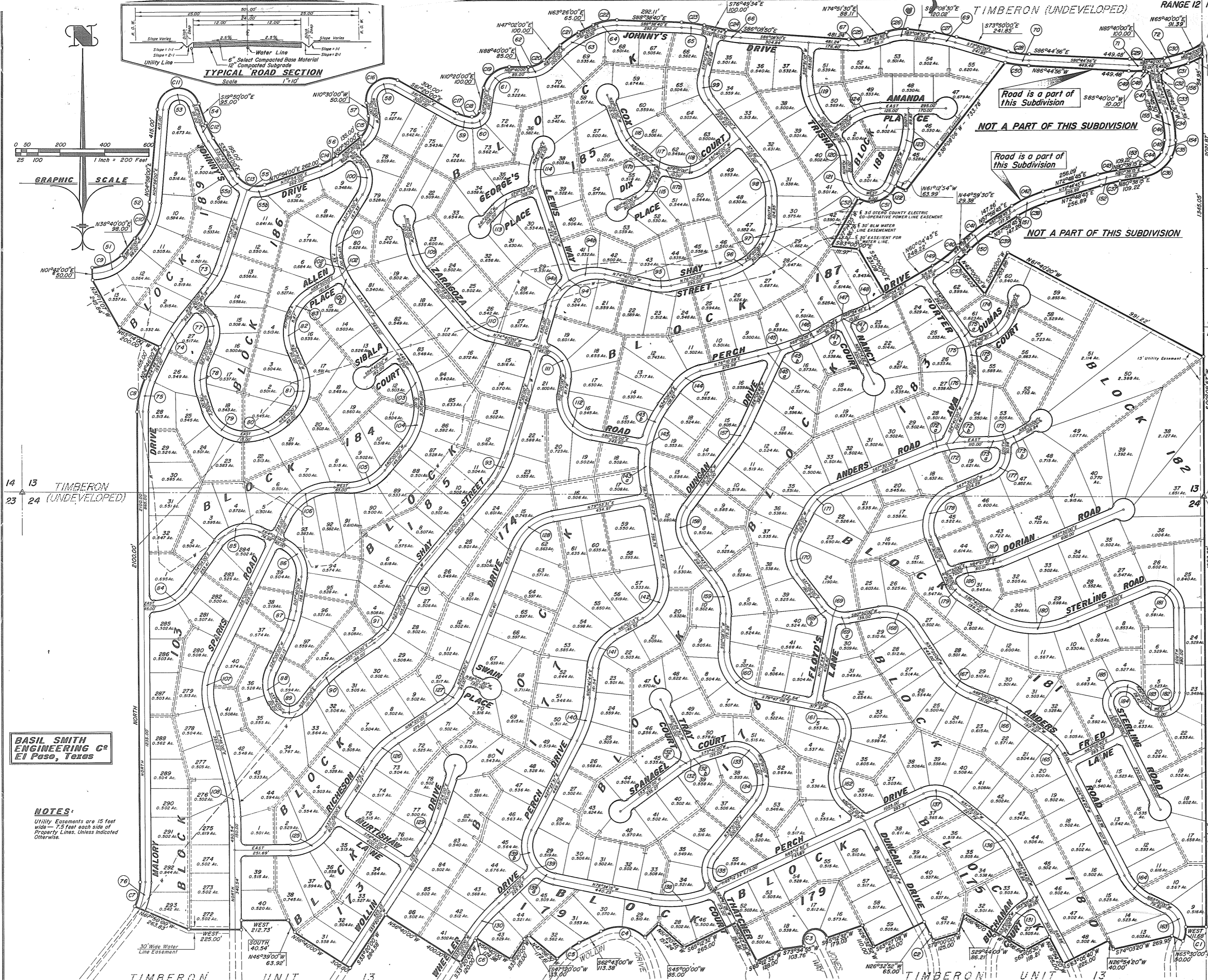
Basil R. Smith, P.E. and L.S., N.M. Lic. # 2857  
"This Subdivision lies within the Platting and Planning jurisdiction of the Governmental Unit of Otero County, New Mexico"  
Basil R. Smith, Land Surveyor

"Developer hereby agrees to construct at his own expense, all roads in the Subdivision including, but not limited to, grading, drainage, base courses, curbs and bridges."  
Developer: John F. Mobley

"A Statement of Development for Roads and Utilities is Recorded in Book 33 Page 14-27 of the Records of Otero County."  
"Restrictive covenants applicable to this Subdivision are Recorded in Book 33 Page 14-27 of the Records of Otero County."  
Approved this 13 day of May, 1985. Robert R. Bell Examining Surveyor, Lic. # 4798  
Approved this 27 day of Feb., 1985. Robert R. Bell Chairman, Otero County Planning Commission



PLAT SHEET 1 OF 6 SHEETS.  
TIMBERON UNIT-17



BASIL SMITH  
ENGINEERING Co.  
El Paso, Texas

NOTES:  
Utility Easements are 15 feet wide — 7.5 feet each side of Property Lines. Unless Indicated Otherwise.

TIMBERON SUB #17  
BK 33 PG 14-27  
BK 33 PG 14-15 10F6

**TIMBERON SUBDIVISION  
UNIT - 17  
PORTION OF SECTIONS 13 and 24  
T-19-S, R-12-E, N.M.P.M.  
OTERO COUNTY, NEW MEXICO**

No	BOUNDARY		CURVE			LOCATION
	RADIUS	DELTA	ARC	TANGENT	CHORD	
C1	125.00'	31°31'15"	68.77'	35.28'	67.90'	Boundary Unit 17
C2	342.92'	04°00'00"	23.94'	11.98'	23.94'	"
C3	50.00'	197°20'34"	172.21'	37.17'	98.96'	"
C4	164.71'	72°17'00"	207.80'	120.29'	194.29'	"
C5	311.05'	20°39'30"	112.15'	56.64'	111.54'	"
C6	89.44'	00°21'46"	5.00'	2.50'	5.00'	"
C7	261.36'	22°10'00"	101.12'	51.20'	100.49'	"
C8	366.59'	24°46'00"	158.46'	80.49'	157.23'	"
C9	155.38'	53°02'00"	143.82'	77.53'	138.74'	"
C10	305.17'	33°42'00"	179.49'	92.43'	176.92'	"
C11	96.46'	155°12'00"	261.29'	438.73'	188.42'	"
C12	328.36'	12°55'00"	74.03'	37.17'	73.87'	"
C13	102.19'	70°21'00"	136.17'	80.34'	80.34'	"
C14	252.89'	20°24'00"	90.04'	45.50'	89.57'	"
C15	102.32'	61°00'00"	108.94'	60.27'	103.86'	"
C16	96.28'	129°10'00"	217.05'	202.61'	173.92'	"
C17	131.55'	28°40'00"	65.82'	33.61'	65.13'	"
C18	34.94'	79°40'00"	48.58'	29.15'	44.76'	"
C19	117.07'	78°20'00"	160.06'	95.37'	147.88'	"
C20	105.54'	4°38'50"	77.39'	40.50'	75.70'	"
C21	371.90'	106°42'00"	106.47'	53.60'	106.11'	"
C22	226.12'	27°55'20"	110.20'	56.22'	109.11'	"
C23	508.08'	11°49'06"	104.80'	52.59'	104.62'	"
C24	406.30'	09°19'16"	66.10'	33.12'	66.03'	"
C25	273.88'	18°59'40"	90.80'	45.82'	90.38'	"
C26	282.23'	22°00'00"	108.37'	54.86'	107.70'	"
C27	639.18'	09°18'30"	103.84'	52.04'	103.73'	"
C28	416.74'	12°55'00"	93.94'	47.17'	93.14'	"
C29	427.61'	07°35'04"	56.66'	28.34'	56.56'	"
C30	258.56'	20°00'00"	90.25'	45.59'	89.80'	"
C31	308.56'	20°00'00"	107.71'	54.41'	107.16'	"
C32	20.00'	90°00'00"	31.42'	20.00'	28.28'	"
C33	220.36'	14°25'30"	55.48'	27.89'	55.33'	"
C34	344.72'	21°54'40"	131.83'	66.73'	131.03'	"
C35	186.48'	24°48'15"	70.86'	40.57'	70.24'	"
C36	371.44.89'	07°40'50"	106.47'	53.60'	106.11'	"
C37	633.06'	07°49'30"	86.46'	43.30'	86.39'	"
C38	551.16'	14°50'00"	142.69'	71.75'	142.29'	"
C39	502.12'	12°59'15"	113.82'	57.15'	113.57'	"
C40	541.34'	05°05'15"	142.55'	71.69'	142.14'	"
C41	552.12'	12°59'15"	125.415'	62.85'	124.88'	"
C42	601.16'	14°50'00"	155.64'	78.26'	155.20'	"
C43	683.06'	07°49'30"	93.94'	47.17'	93.29'	"
C44	121.45'	52°40'50"	111.67'	60.13'	107.78'	"
C45	134.48'	24°48'15"	58.22'	29.57'	57.77'	"
C46	294.72'	21°54'40"	112.71'	57.05'	112.02'	"
C47	270.36'	14°25'30"	68.07'	34.21'	67.89'	"
C48	20.00'	90°00'00"	31.42'	20.00'	28.28'	"
C49	477.61'	07°35'04"	63.22'	30.00'	63.18'	"
C50	466.74'	07°35'04"	105.20'	52.83'	104.99'	"
C51	114.97'	67°24'00"	135.25'	76.68'	127.58'	"
C52	135.00'	18°57'56"	44.69'	22.55'	44.48'	"
C53	591.34'	08°00'00"	51.60'	25.82'	51.59'	"

No	ROAD CENTERLINE		CURVE			LOCATION
	RADIUS	DELTA	ARC	TANGENT	CHORD	
109	289.31'	29°04'00"	146.77'	75.00'	145.20'	Zaragoza Road
110	198.11'	33°42'00"	116.52'	60.00'	114.85'	"
111	115.72'	81°40'00"	164.94'	100.00'	151.32'	"
112	157.79'	67°06'00"	239.87'	150.00'	217.44'	"
113	112.15'	29°39'30"	96.00'	50.00'	96.00'	"
114	172.25'	44°14'00"	132.98'	70.00'	129.70'	George's Place
115	185.81'	35°47'30"	116.07'	60.00'	114.19'	"
116	237.41'	28°22'00"	117.54'	60.00'	116.34'	"
117	285.38'	29°27'00"	146.68'	75.00'	145.07'	"
117a	285.38'	14°43'30"	73.34'	36.87'	73.14'	"
117b	285.38'	14°43'30"	73.34'	36.87'	73.14'	"
118	164.56'	48°29'00"	140.94'	75.00'	136.77'	"
119	259.25'	42°11'10"	190.88'	100.00'	186.60'	"
120	158.24'	38°20'00"	105.87'	55.00'	103.90'	"
121	110.00'	90°00'00"	172.79'	110.00'	155.56'	"
122	89.97'	67°24'00"	105.83'	60.00'	99.83'	"
123	250.23'	22°36'00"	98.70'	50.00'	98.06'	"
124	215.78'	38°20'00"	144.36'	75.00'	141.69'	"
125	186.46'	56°40'00"	189.43'	100.00'	176.40'	"
126	368.64'	23°00'00"	147.98'	75.00'	146.99'	"
127	161.73'	34°21'30"	96.99'	50.00'	95.54'	"
128	225.89'	57°55'01"	228.34'	125.00'	218.74'	"
129	409.19'	13°56'00"	99.51'	50.00'	99.26'	"
130	814.44'	14°00'00"	199.00'	100.00'	198.51'	"
131	188.17'	29°45'40"	97.74'	50.00'	96.65'	"
132	280.94'	20°11'00"	98.96'	50.00'	98.45'	"
132b	280.94'	10°05'30"	49.48'	24.81'	49.42'	"
133	115.00'	90°00'00"	180.64'	115.00'	162.64'	"
134	141.55'	55°50'00"	137.94'	75.00'	132.54'	"
135	119.31'	64°18'28"	133.91'	75.00'	126.99'	"
136	342.59'	24°41'49"	147.67'	75.00'	146.53'	"
137	121.94'	63°11'77"	134.48'	75.00'	127.77'	"
138	416.46'	36°13'13"	288.84'	150.00'	285.14'	"
139	150.80'	105°58'06"	278.90'	200.00'	240.81'	"
139a	150.80'	35°54'15"	94.50'	48.86'	92.96'	"
139b	150.80'	70°03'51"	184.41'	105.72'	173.13'	"
140	547.95'	20°41'07"	197.82'	100.00'	196.75'	"
141	194.96'	54°18'29"	184.80'	100.00'	177.96'	"
142	174.83'	203°32'7"	219.64'	125.00'	203.27'	"
143	470.17'	44°16'18"	36.30'	35.33'	35.33'	"
143a	470.17'	22°18'19"	183.04'	92.69'	181.88'	"
143b	470.17'	21°57'59"	180.26'	91.25'	179.16'	"
144	195.33'	42°00'40"	143.22'	75.00'	140.03'	"
145	1428.38'	08°00'34"	199.67'	100.00'	199.51'	"
145a	1428.38'	04°08'24"	103.21'	51.63'	103.19'	"
145b	1428.38'	03°52'45"	96.47'	48.25'	96.45'	"
146	461.16'	10°33'00"	99.28'	50.00'	98.85'	"
147	463.87'	12°18'15"	99.62'	50.00'	99.42'	"
147a	463.87'	06°09'08"	49.81'	24.93'	49.79'	"
147b	463.87'	06°09'07"	49.81'	24.93'	49.78'	"
148	581.24'	09°50'00"	99.76'	50.00'	99.63'	"
149	566.34'	15°05'15"	149.13'	75.00'	148.70'	"
150	527.12'	12°59'15"	119.48'	60.00'	119.23'	"
151	576.16'	10°33'00"	148.25'	75.00'	148.25'	"
152	558.06'	07°49'30"	89.87'	45.00'	89.80'	"
153	146.45'	52°40'50"	134.65'	72.51'	129.96'	"
154	159.48'	24°48'15"	69.04'	35.07'	68.50'	"
155	319.72'	21°54'40"	122.27'	61.89'	121.52'	"
156	265.35'	14°25'30"	61.77'	31.05'	61.61'	"
157	522.75'	10°43'24"	99.71'	50.00'	99.56'	"
158	133.69'	73°30'15"	171.73'	100.00'	161.53'	"
159	121.55'	38°52'18"	146.26'	75.00'	141.45'	"
160	175.84'	80°55'57"	248.38'	150.00'	228.24'	"
161	110.77'	96°20'13"	186.25'	123.75'	165.07'	"
162	149.32'	67°37'10"	176.23'	100.00'	166.18'	"
163	100.00'	90°00'00"	157.08'	100.00'	141.42'	"
164	214.20'	38°35'40"	144.29'	75.00'	141.57'	"
165	191.90'	24°41'49"	82.72'	42.01'	82.08'	"
166	326.80'	17°22'51"	99.23'	50.00'	98.85'	"
167	233.13'	35°40'00"	145.13'	75.00'	142.79'	"
168	154.48'	65°50'00"	177.50'	100.00'	167.89'	"
169	124.49'	62°08'00"	135.00'	75.00'	128.49'	"
169a	124.49'	32°53'00"	71.45'	36.74'	70.47'	"
169b	124.49'	29°15'00"	63.55'	32.49'	62.87'	"
170	153.11'	66°18'00"	177.17'	100.00'	167.45'	"
171	216.38'	38°14'00"	144.39'	75.00'	141.79'	"
172	377.05'	22°30'00"	148.07'	75.00'	147.12'	"
172a	377.05'	10°25'58"	68.66'	34.42'	68.56'	"
172b	377.05'	12°04'02"	79.41'	39.85'	79.27'	"
173	261.56'	32°00'00"	146.08'	75.00'	144.19'	"
173a	261.56'	16°39'48"	76.07'	38.31'	75.80'	"
173b	261.56'	15°20'11"	70.01'	35.22'	69.80'	"
174	168.29'	48°02'30"	141.31'	75.00'	137.01'	"
175	240.92'	34°35'00"	145.62'	75.00'	143.22'	"
175a	240.92'	17°17'30"	72.71'	36.63'	72.43'	"
175b	240.92'	17°17'30"	72.71'	36.63'	72.43'	"
176	228.68'	24°40'00"	98.45'	50.00'	97.69'	"
177	104.76'	67°30'00"	123.42'	70.00'	116.41'	"
178	150.00'	90°00'00"	235.62'	150.00'	212.13'	"
179	102.14'	34°10'00"	60.91'	31.39'	60.11'	"
180	377.47'	55°50'00"	167.93'	206.00'	153.45'	"
181	100.23'	112°30'00"	196.80'	150.00'	166.62'	"
182	80.00'	90°00'00"	125.86'	80.00'	111.24'	"

THENCE along the said R.O.W. line a distance of 143.82 feet along the arc of a curve to the left whose radius is 155.38 feet, whose central angle is 53°02'00" and whose long chord bears North 65°11'00" East a distance of 138.74 feet to a point;

THENCE North 38°40'00" East continuing along the said R.O.W. line a distance of 98.00 feet to a point;

THENCE continuing along the said R.O.W. line a distance of 179.49 feet along the arc of a curve to the left whose radius is 305.17 feet, whose central angle is 33°42'00" and whose long chord bears North 21°49'00" East a distance of 176.92 feet to a point;

THENCE North 04°58'00" East continuing along the said R.O.W. line a distance of 415.00 feet to a point;

THENCE continuing along the said R.O.W. line a distance of 261.29 feet along the arc of a curve to the right whose radius is 96.46 feet, whose central angle is 155°12'00" and whose long chord bears North 82°34'00" East a distance of 188.42 feet to a point;

THENCE South 19°50'00" East continuing along the said R.O.W. line a distance of 95.00 feet to a point;

THENCE continuing along the said R.O.W. line a distance of 74.03 feet along the arc of a curve to the left whose radius is 320.36 feet, whose central angle is 12°55'00" and whose long chord bears South 26°17'30" East a distance of 73.87 feet to a point;

THENCE South 32°45'00" East continuing along the said R.O.W. line a distance of 195.00 feet to a point;

THENCE continuing along the said R.O.W. line a distance of 136.17 feet along the arc of a curve to the left whose radius is 102.19 feet, whose central angle is 76°21'00" and whose long chord bears South 70°55'30" East a distance of 126.32 feet to a point;

THENCE North 70°54'00" East continuing along the said R.O.W. line a distance of 262.00 feet to a point;

THENCE continuing along the said R.O.W. line a distance of 90.04 feet along the arc of a curve to the left whose radius is 252.89 feet, whose central angle is 20°24'00" and whose long chord bears North 60°42'00" East a distance of 89.57 feet to a point;

THENCE North 50°30'00" East continuing along the said R.O.W. line a distance of 135.00 feet to a point;

THENCE continuing along the said R.O.W. line a distance of 108.94 feet along the arc of a curve to the left whose radius is 102.32 feet, whose central angle is 61°00'00" and whose long chord bears North 20°00'00" East a distance of 103.86 feet to a point;

THENCE North 10°30'00" West continuing along the said R.O.W. line a distance of 50.00 feet to a point;

THENCE continuing along the said R.O.W. line a distance of 217.05 feet along the arc of a curve to the right whose radius is 96.28 feet, whose central angle is 129°10'00" and whose long chord bears North 54°05'00" East a distance of 173.92 feet to a point;

THENCE South 61°20'00" East continuing above the said R.O.W. line a distance of 300.00 feet to a point;

THENCE continuing along the said R.O.W. line a distance of 65.82 feet along the arc of a curve to the left whose radius is 131.55 feet, whose central angle is 28°40'00" and whose long chord bears South 75°40'00" East a distance of 65.13 feet to a point;

THENCE continuing along the said R.O.W. line a distance of 48.58 feet along the arc of a curve to the left whose radius is 34.94 feet, whose central angle is 79°40'00" and whose long chord bears North 50°10'00" East a distance of 44.76 feet to a point;

THENCE North 10°20'00" East continuing along the said R.O.W. line a distance of 100.00 feet to a point;

THENCE continuing along the said R.O.W. line a distance of 160.06 feet along the arc of a curve to the right whose radius is 117.07 feet, whose central angle is 70°20'00" and whose long chord bears North 49°30'00" East a distance of 147.88 feet to a point;

THENCE North 88°40'00" East continuing along the said R.O.W. line a distance of 85.00 feet to a point;

THENCE continuing along the said R.O.W. line a distance of 77.39 feet along the arc of a curve to the left whose radius is 106.51 feet, whose central angle is 41°38'00" and whose long chord bears North 67°51'00" East a distance of 75.70 feet to a point;

THENCE North 47°02'00" East continuing along the said R.O.W. line a distance of 100.00 feet to a point;

THENCE continuing along the said R.O.W. line a distance of 106.47 feet along the arc of a curve to the right whose radius is 371.98 feet, whose central angle is 16°24'00" and whose long chord bears North 55°14'00" East a distance of 106.11 feet to a point;

THENCE North 63°26'00" East continuing along the said R.O.W. line a distance of 65.00 feet to a point;

THENCE continuing along the said R.O.W. line a distance of 110.20 feet along the arc of a curve to the right whose radius is 228.12 feet, whose central angle is 27°55'20" and whose long chord bears North 77°23'40" East a distance of 109.11 feet to a point;

THENCE South 88°38'40" East continuing along the said R.O.W. line a distance of 292.11 feet to a point;

THENCE continuing along the said R.O.W. line a distance of 104.80 feet along the arc of a curve to the right whose radius is 508.08 feet, whose central angle is 11°49'06" and whose long chord bears South 82°44'07" East a distance of 104.62 feet to a point;

THENCE South 76°49'34" East continuing along the said R.O.W. line a distance of 100.00 feet to a point;

THENCE continuing along the said R.O.W. line a distance of 66.10 feet along the arc of a curve to the left whose radius is 406.30 feet, whose central angle is 09°19'16" and whose long chord bears South 81°29'12" East a distance of 66.03 feet to a point;

THENCE South 86°08'50" East continuing along the said R.O.W. line a distance of 481.24 feet to a point;

THENCE continuing along the said R.O.W. line a distance of 90.80 feet along the arc of a curve to the left whose radius is 273.88 feet, whose central angle is 18°59'40" and whose long chord bears North 84°21'20" East a distance of 90.38 feet to a point;

THENCE North 74°51'30" East continuing along the said R.O.W. line a distance of 88.11 feet to a point;

THENCE continuing along the said R.O.W. line a distance of 108.37 feet along the arc of a curve to the right whose radius is 282.23 feet, whose central angle is 22°00'00" and whose long chord bears North 85°51'30" East a distance of 107.70 feet to a point;

THENCE South 83°08'30" East continuing along the said R.O.W. line a distance of 120.02 feet to a point;

THENCE continuing along the said R.O.W. line a distance of 103.84 feet along the arc of a curve to the right whose radius is 639.18 feet, whose central angle is 09°18'30" and whose long chord bears South 78°29'15" East a distance of 103.73 feet to a point;

THENCE South 73°50'00" East continuing along the said R.O.W. line a distance of 241.85 feet to a point;

THENCE continuing along the said R.O.W. line a distance of 93.94 feet along the arc of a curve to the left whose radius is 416.74 feet, whose central angle is 12°54'56" and whose long chord bears South 80°17'28" East a distance of 93.74 feet to a point;

THENCE South 86°44'56" East continuing along the said R.O.W. line a distance of 449.48 feet to a point;

THENCE continuing along the said R.O.W. line a distance of 56.60 feet along the arc of a curve to the left whose radius is 427.61 feet, whose central angle is 07°35'04" and whose long chord bears North 89°27'32" East a distance of 56.55 feet to a point;

THENCE North 85°40'00" East continuing along the said R.O.W. line a distance of 100.00 feet to a point;

THENCE continuing along the said R.O.W. line a distance of 90.25 feet along the arc of a curve to the left whose radius is 258.56 feet, whose central angle is 20°00'00" and whose long chord bears North 75°40'00" East a distance of 89.80 feet to a point;

THENCE North 65°40'00" East continuing along the said R.O.W. line a distance of 91.39 feet to the East 1/4 corner of said Section 13;

THENCE South 00°09'57" West along the East line of said Section 13 a distance of 2021.87 feet to the Point of Beginning of the parcel being described and containing a gross acreage of 424.455 acres of land more or less.

SAVE and EXCEPT a parcel of land lying in Section 13, Township 19 South, Range 12 East, New Mexico Prime Meridian, Otero County, New Mexico and being more particularly described as follows:

BEGINNING at the East 1/4 corner of Section 13, T-19-S, R-13-E, N.M.P.M., Otero County, New Mexico;

THENCE South 00°09'57" West along the East line of said Section 13 a distance of 54.95 feet to a point, said point is the Point of Beginning of the parcel being described;

THENCE continuing along the said East line a distance of 1345.05 feet to a point;

THENCE North 61°40'20" West a distance of 991.22 feet to a point;

THENCE South 30°00'00" West a distance of 203.86 feet to a point;

THENCE North 42°00'00" West a distance of 185.03 feet to a point in the South R.O.W. line of a 50 foot wide road;

THENCE along the said R.O.W. line a distance of 51.60 feet along the arc of a curve to the left whose radius is 591.34 feet, whose central angle is 05°00'00" and whose long chord bears North 47°29'30" East a distance of 51.59 feet to a point;

THENCE North 44°59'30" East continuing along said R.O.W. line a distance of 29.38 feet to a point;

THENCE continuing along the said R.O.W. line a distance of 113.82 feet along the arc of a curve to the right whose radius is 502.12 feet, whose central angle is 12°59'15" and whose long chord bears North 51°29'08" East a distance of 113.57 feet to a point;

THENCE North 57°58'45" East continuing along the said R.O.W. line a distance of 147.26 feet to a point;

THENCE continuing along the said R.O.W. line a distance of 142.69 feet along the arc of a curve to the right whose radius is 551.16 feet, whose central angle is 14°50'00" and whose long chord bears North 65°23'45" East a distance of 142.29 feet to a point;

THENCE North 72°48'45" East continuing along the said R.O.W. line a distance of 256.89 feet to a point;

THENCE continuing along the said R.O.W. line a distance of 86.46 feet along the arc of a curve to the right whose radius is 633.06 feet, whose central angle is 07°49'30" and whose long chord bears North 76°43'30" East a distance of 86.39 feet to a point;

THENCE North 80°38'15" East continuing along the said R.O.W. line a distance of 109.22 feet to a point;

THENCE continuing along the said R.O.W. line a distance of 157.64 feet along the arc of a curve to the left whose radius is 171.45 feet, whose central angle is 52°40'50" and whose long chord bears North 54°17'50" East a distance of 152.15 feet to a point;

THENCE continuing along the said R.O.W. line a distance of 79.86 feet along the arc of a curve to the left whose radius is 184.48 feet, whose central angle is 24°48'15" and whose long chord bears North 15°33'18" East a distance of 79.24 feet to a point;

THENCE continuing along the said R.O.W. line a distance of 131.83 feet along the arc of a curve to the left whose radius is 344.72 feet, whose central angle is 21°54'40" and whose long chord bears North 07°48'10" West a distance of 131.03 feet to a point;

THENCE North 18°45'30" West continuing along the said R.O.W. line a distance of 117.39 feet to a point;

THENCE continuing along the said R.O.W. line a distance of 55.48 feet along the arc of a curve to the right whose radius is 220.36 feet, whose central angle is 14°25'30" and whose long chord bears North 11°32'45" West a distance of 55.33 feet to a point;

THENCE continuing along the said R.O.W. line a distance of 31.42 feet along the arc of a curve to the right whose radius is 20.00 feet, whose central angle is 90°00'00" and whose long chord bears North 40°40'00" East a distance of 28.28 feet to a point in the South R.O.W. line of a 50 foot wide road;

THENCE along the said R.O.W. line a distance of 107.71 feet along the arc of a curve to the left whose radius is 308.56 feet, whose central angle is 20°00'00" and whose long chord bears North 75°40'00" East a distance of 107.16 feet to a point;

THENCE North 65°40'00" East continuing along the said R.O.W. line a distance of 68.60 feet to the Point of Beginning of the parcel being described and containing 12.935 acres of land more or less.

ALSO SAVE and EXCEPT a parcel of land lying in Section 13, Township 19 South, Range 12 East, New Mexico Prime Meridian, Otero County, New Mexico and being more particularly described as follows:

BEGINNING at the East 1/4 corner of Section 13, T-19-S, R-12-E, N.M.P.M., Otero County, New Mexico, said 1/4 corner in the North R.O.W. line of a 50 foot wide road;

THENCE South 65°40'00" West along said R.O.W. line a distance of 91.39 feet to a point;

THENCE continuing along the said R.O.W. line a distance of 90.25 feet along the arc of a curve to the right whose radius is 258.56 feet, whose central angle is 20°00'00" and whose long chord bears South 75°40'00" West a distance of 89.80 feet to a point;

THENCE South 85°40'00" West continuing along the said R.O.W. line a distance of 100.00 feet to a point;

THENCE South 04°20'00" East a distance of 50.00 feet to a point in the South R.O.W. line of said 50 foot wide road, said point is the Point of Beginning of the parcel being described;

THENCE along the said R.O.W. line a distance of 63.22 feet along the arc of a curve to the right whose radius is 477.61 feet, whose central angle is 07°35'04" and whose long chord bears South 89°27'32" West a distance of 63.18 feet to a point;

THENCE North 86°44'56" West continuing along the said R.O.W. line a distance of 449.48 feet to a point;

THENCE continuing along the said R.O.W. line a distance of 105.21 feet along the arc of a curve to the right whose radius is 466.74 feet, whose central angle is 12°54'56" and whose long chord bears North 80°17'28" West a distance of 104.99 feet to a point;

THENCE South 38°08'06" West a distance of 733.78 feet to a point;

THENCE North 61°12'54" West a distance of 63.99 feet to a point in the East R.O.W. line of a 50 foot wide road;

THENCE along the said R.O.W. line a distance of 135.25 feet along the arc of a curve to the right whose radius is 114.97 feet, whose central angle is 67°24'00" and whose long chord bears South 56°18'00" West a distance of 127.58 feet to a point;

THENCE West continuing along the said R.O.W. line a distance of 5.00 feet to a point;

THENCE continuing along the said R.O.W. line a distance of 44.69 feet along the arc of a curve to the right whose radius is 135.00 feet, whose central angle is 18°57'56" and whose long chord bears North 80°31'02" West a distance

of 44.48 feet to a point;

THENCE South 27°14'05" West a distance of 236.78 feet to a point;

THENCE South 83°00'00" East a distance of 111.97 feet to a point;

THENCE South 30°00'00" East a distance of 231.08 feet to a point in the North R.O.W. line of a 50 foot wide road;

THENCE North 60°04'45" East along the said R.O.W. line a distance of 248.22 feet to a point;

THENCE continuing along the said R.O.W. line a distance of 142.55 feet along the arc of a curve to the left whose radius is 541.34 feet, whose central angle is 15°05'15" and whose long chord bears North 52°32'08" East a distance of 142.14 feet to a point;

THENCE North 44°59'30" East continuing along the said R.O.W. line a distance of 29.38 feet to a point;

THENCE continuing along the said R.O.W. line a distance of 125.15 feet along the arc of a curve to the right whose radius is 552.12 feet, whose central angle is 12°59'15" and whose long chord bears North 51°29'08" East a distance of 124.88 feet to a point;

THENCE North 57°58'45" East continuing along the said R.O.W. line a distance of 147.26 feet to a point;

THENCE continuing along the said R.O.W. line a distance of 155.64 feet along the arc of a curve to the right whose radius is 601.16 feet, whose central angle is 14°50'00" and whose long chord bears North 65°23'45" East a distance of 155.20 feet to a point;

THENCE North 72°48'45" East continuing along the said R.O.W. line of 256.89 feet to a point;

THENCE continuing along the said R.O.W. line a distance of 93.29 feet along the arc of a curve to the right whose radius is 683.06 feet, whose central angle is 07°49'30" and whose long chord bears North 76°43'30" East a distance of 93.21 feet to a point;

THENCE North 80°38'15" East continuing along the said R.O.W. line a distance of 109.22 feet to a point;

THENCE continuing along the said R.O.W. line a distance of 111.67 feet along the arc of a curve to the left whose radius is 121.45 feet, whose central angle is 52°40'50" and whose long chord bears North 54°17'50" East a distance of 107.78 feet to a point;

THENCE continuing along the said R.O.W. line a distance of 58.22 feet along the arc of a curve to the left whose radius is 134.48 feet, whose central angle is 24°48'15" and whose long chord bears North 15°33'18" East a distance of 57.81 feet to a point;

THENCE continuing along the said R.O.W. line a distance of 112.71 feet along the arc of a curve to the left whose radius is 294.72 feet, whose central angle is 21°54'40" and whose long chord bears North 07°48'10" West a distance of 112.02 feet to a point;

THENCE North 18°45'30" West continuing along the said R.O.W. line a distance of 117.39 feet to a point;

THENCE continuing along the said R.O.W. line a distance of 68.07 feet along the arc of a curve to the right whose radius is 270.36 feet, whose central angle is 14°25'30" and whose long chord bears North 11°32'45" West a distance of 67.89 feet to a point;

THENCE continuing along the said R.O.W. line a distance of 31.42 feet along the arc of a curve to the left whose radius is 20.00 feet, whose central angle is 90°00'00" and whose long chord bears North 49°20'00" West a distance of 28.28 feet to a point in the South R.O.W. line of a 50 foot wide road;

THENCE South 85°40'00" West along said R.O.W. line a distance of 10.00 feet to the Point of Beginning of the parcel being described and containing 15.632 acres of land more or less, leaving a net acreage of 395.888 acres of land more or less.

SUBJECT TO Easements for:

1). B.L.M. Water Line

2). Timberon 10" Diameter Transmission Line

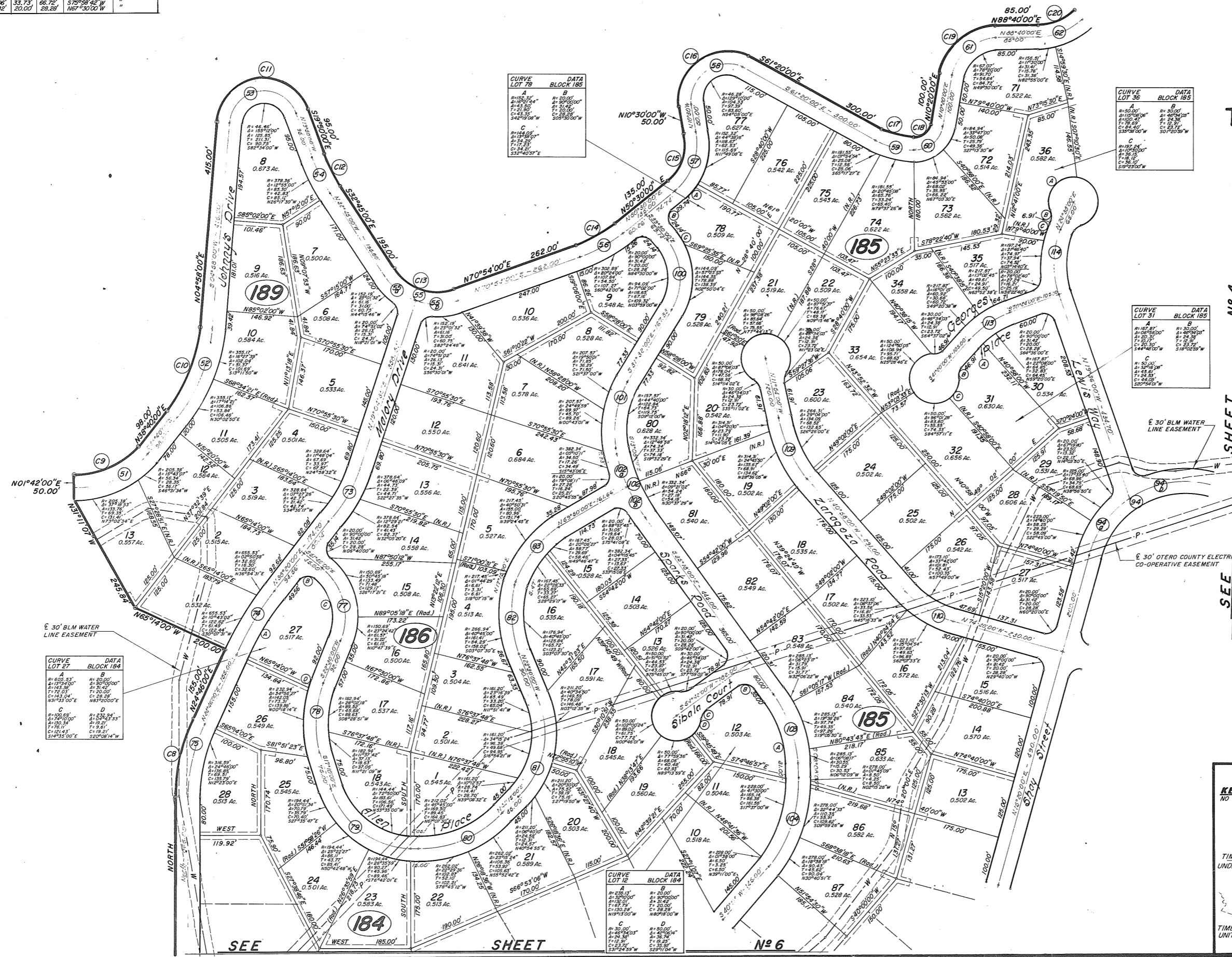
and 3). Otero County Electric Co-op Power Line.

TIMBERON SUB #17  
BK 33 PG 16A-17 2A OF 6

ADDITIONAL	CURVE				DATA		
NO	R	A	T	C	G. BRG.	BLOCK	
5A	99.61'	13°27'00"	23.38'	11.75'	533°13'30"E	181	
5B	55.80'	63°30'00"	61.84'	34.23'	528°15'00"E	"	
5C	35.00'	90°00'00"	86.39'	55.00'	77.78'	N43°02'00"E	
21A	105.80'	63°30'00"	117.26'	65.40'	111.35'	N59°05'00"W	182
21B	49.61'	90°00'00"	77.83'	49.61'	70.16'	N71°30'00"W	"
21C	45.00'	90°00'00"	70.69'	45.00'	63.64'	S18°30'00"W	"
31A	226.26'	09°57'23"	39.32'	19.71'	39.27'	S79°04'42"W	182
31B	176.36'	165°57'23"	39.16'	36.01'	51.94'	S79°04'42"W	"
31C	20.00'	90°00'00"	31.42'	20.00'	28.29'	S65°30'00"W	"
31D	77.14'	34°10'12"	46.00'	23.71'	45.32'	S38°53'00"E	"
44A	176.36'	09°57'23"	39.32'	19.71'	39.27'	S79°04'42"W	182
44B	226.26'	165°57'23"	39.16'	36.01'	51.94'	S79°04'42"W	"
44C	20.00'	90°00'00"	31.42'	20.00'	28.29'	N67°30'00"W	"



**TIMBERON SUBDIVISION  
UNIT-17**  
PORTION OF SECTIONS 13 and 24  
T-19-S, R-12-E, N.M.P.M.  
OTERO COUNTY, NEW MEXICO  
Scale: 1"=100' February 27, 1985



CURVE	LOT	NO	DATA
A	185	76	0.542 Ac.
B	185	75	0.545 Ac.
C	185	74	0.622 Ac.
D	185	73	0.562 Ac.
E	185	72	0.514 Ac.
F	185	71	0.522 Ac.
G	185	70	0.522 Ac.
H	185	69	0.522 Ac.
I	185	68	0.522 Ac.
J	185	67	0.522 Ac.
K	185	66	0.522 Ac.
L	185	65	0.522 Ac.
M	185	64	0.522 Ac.
N	185	63	0.522 Ac.
O	185	62	0.522 Ac.
P	185	61	0.522 Ac.
Q	185	60	0.522 Ac.
R	185	59	0.522 Ac.
S	185	58	0.522 Ac.
T	185	57	0.522 Ac.
U	185	56	0.522 Ac.
V	185	55	0.522 Ac.
W	185	54	0.522 Ac.
X	185	53	0.522 Ac.
Y	185	52	0.522 Ac.
Z	185	51	0.522 Ac.

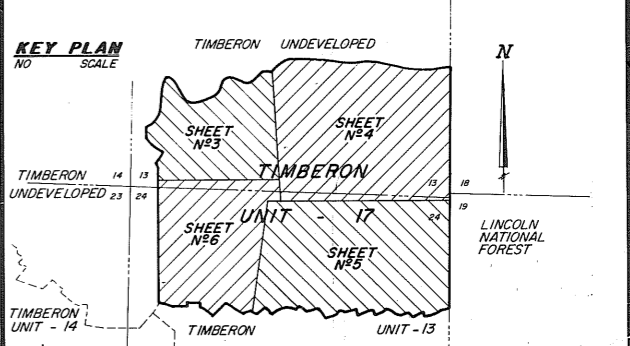
CURVE	LOT	NO	DATA
A	185	76	0.542 Ac.
B	185	75	0.545 Ac.
C	185	74	0.622 Ac.
D	185	73	0.562 Ac.
E	185	72	0.514 Ac.
F	185	71	0.522 Ac.
G	185	70	0.522 Ac.
H	185	69	0.522 Ac.
I	185	68	0.522 Ac.
J	185	67	0.522 Ac.
K	185	66	0.522 Ac.
L	185	65	0.522 Ac.
M	185	64	0.522 Ac.
N	185	63	0.522 Ac.
O	185	62	0.522 Ac.
P	185	61	0.522 Ac.
Q	185	60	0.522 Ac.
R	185	59	0.522 Ac.
S	185	58	0.522 Ac.
T	185	57	0.522 Ac.
U	185	56	0.522 Ac.
V	185	55	0.522 Ac.
W	185	54	0.522 Ac.
X	185	53	0.522 Ac.
Y	185	52	0.522 Ac.
Z	185	51	0.522 Ac.

CURVE	LOT	NO	DATA
A	185	76	0.542 Ac.
B	185	75	0.545 Ac.
C	185	74	0.622 Ac.
D	185	73	0.562 Ac.
E	185	72	0.514 Ac.
F	185	71	0.522 Ac.
G	185	70	0.522 Ac.
H	185	69	0.522 Ac.
I	185	68	0.522 Ac.
J	185	67	0.522 Ac.
K	185	66	0.522 Ac.
L	185	65	0.522 Ac.
M	185	64	0.522 Ac.
N	185	63	0.522 Ac.
O	185	62	0.522 Ac.
P	185	61	0.522 Ac.
Q	185	60	0.522 Ac.
R	185	59	0.522 Ac.
S	185	58	0.522 Ac.
T	185	57	0.522 Ac.
U	185	56	0.522 Ac.
V	185	55	0.522 Ac.
W	185	54	0.522 Ac.
X	185	53	0.522 Ac.
Y	185	52	0.522 Ac.
Z	185	51	0.522 Ac.

CURVE	LOT	NO	DATA
A	184	28	0.513 Ac.
B	184	27	0.517 Ac.
C	184	26	0.549 Ac.
D	184	25	0.545 Ac.
E	184	24	0.501 Ac.
F	184	23	0.518 Ac.
G	184	22	0.518 Ac.
H	184	21	0.545 Ac.
I	184	20	0.545 Ac.
J	184	19	0.545 Ac.
K	184	18	0.545 Ac.
L	184	17	0.537 Ac.
M	184	16	0.500 Ac.
N	184	15	0.508 Ac.
O	184	14	0.538 Ac.
P	184	13	0.556 Ac.
Q	184	12	0.550 Ac.
R	184	11	0.641 Ac.
S	184	10	0.536 Ac.
T	184	9	0.508 Ac.
U	184	8	0.508 Ac.
V	184	7	0.508 Ac.
W	184	6	0.508 Ac.
X	184	5	0.533 Ac.
Y	184	4	0.501 Ac.
Z	184	3	0.519 Ac.
AA	184	2	0.564 Ac.
AB	184	1	0.557 Ac.

**BASIL SMITH  
ENGINEERING C<sup>2</sup>  
El Paso, Texas**

**NOTES:**  
Utility Easements are 15 feet  
wide - 7.5 feet each side of  
Property Lines.



TIMBERON SUB #17  
BK 33 PG 18-19 30F6

CURVE DATA BLOCK 185  
LOT 55

A	115.00'	N73°15'30"E
B	100.00'	N73°15'30"E
C	115.00'	N73°15'30"E
D	100.00'	N73°15'30"E
E	115.00'	N73°15'30"E
F	100.00'	N73°15'30"E
G	115.00'	N73°15'30"E
H	100.00'	N73°15'30"E
I	115.00'	N73°15'30"E
J	100.00'	N73°15'30"E

CURVE DATA BLOCK 185  
LOT 36

A	115.00'	N73°15'30"E
B	100.00'	N73°15'30"E
C	115.00'	N73°15'30"E
D	100.00'	N73°15'30"E
E	115.00'	N73°15'30"E
F	100.00'	N73°15'30"E
G	115.00'	N73°15'30"E
H	100.00'	N73°15'30"E
I	115.00'	N73°15'30"E
J	100.00'	N73°15'30"E

CURVE DATA BLOCK 185  
LOT 51

A	115.00'	N73°15'30"E
B	100.00'	N73°15'30"E
C	115.00'	N73°15'30"E
D	100.00'	N73°15'30"E
E	115.00'	N73°15'30"E
F	100.00'	N73°15'30"E
G	115.00'	N73°15'30"E
H	100.00'	N73°15'30"E
I	115.00'	N73°15'30"E
J	100.00'	N73°15'30"E

CURVE DATA BLOCK 174  
LOT 21

A	115.00'	N73°15'30"E
B	100.00'	N73°15'30"E
C	115.00'	N73°15'30"E
D	100.00'	N73°15'30"E
E	115.00'	N73°15'30"E
F	100.00'	N73°15'30"E
G	115.00'	N73°15'30"E
H	100.00'	N73°15'30"E
I	115.00'	N73°15'30"E
J	100.00'	N73°15'30"E

CURVE DATA BLOCK 188  
LOT 46

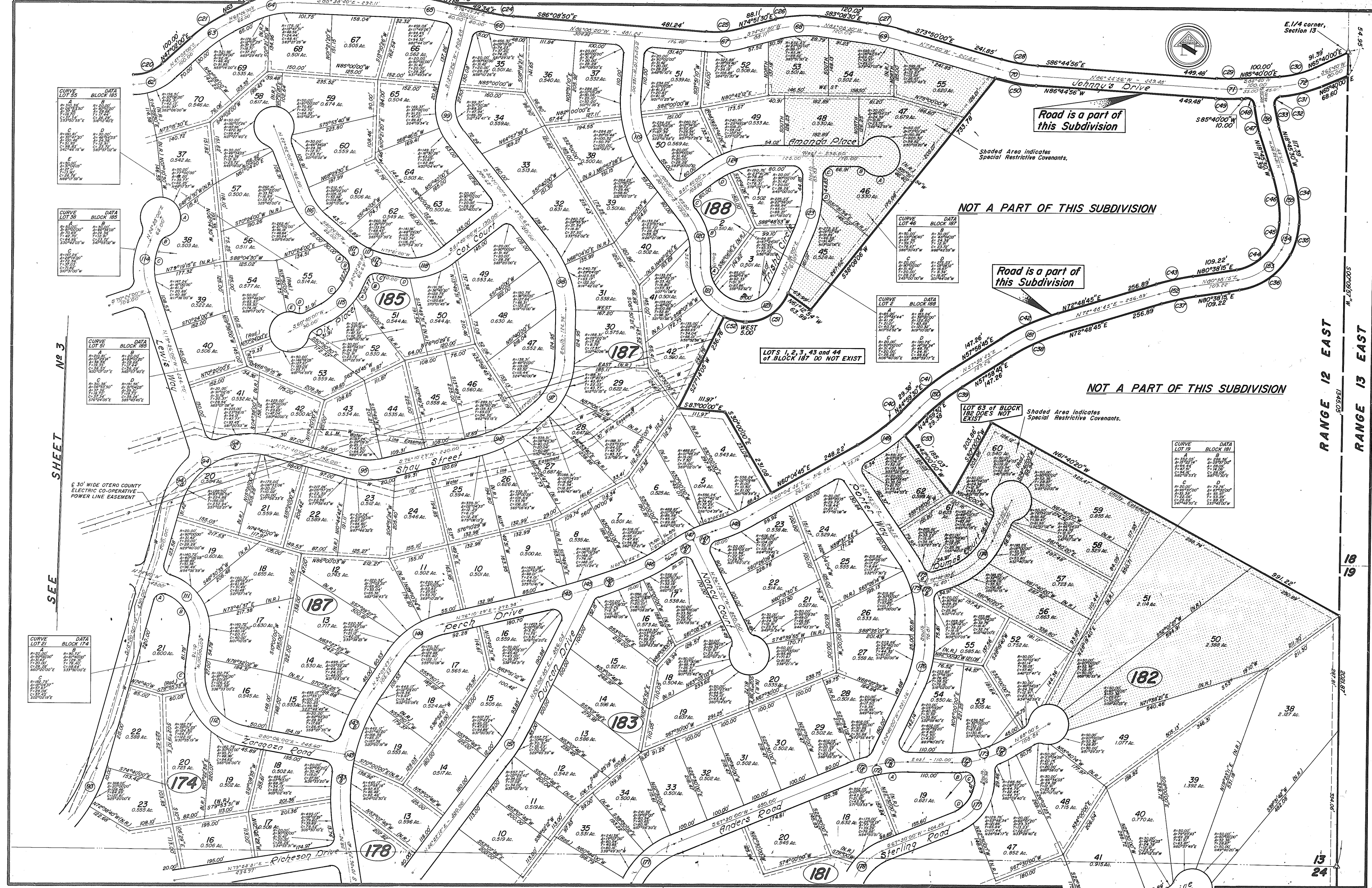
A	115.00'	N73°15'30"E
B	100.00'	N73°15'30"E
C	115.00'	N73°15'30"E
D	100.00'	N73°15'30"E
E	115.00'	N73°15'30"E
F	100.00'	N73°15'30"E
G	115.00'	N73°15'30"E
H	100.00'	N73°15'30"E
I	115.00'	N73°15'30"E
J	100.00'	N73°15'30"E

CURVE DATA BLOCK 188  
LOT 2

A	115.00'	N73°15'30"E
B	100.00'	N73°15'30"E
C	115.00'	N73°15'30"E
D	100.00'	N73°15'30"E
E	115.00'	N73°15'30"E
F	100.00'	N73°15'30"E
G	115.00'	N73°15'30"E
H	100.00'	N73°15'30"E
I	115.00'	N73°15'30"E
J	100.00'	N73°15'30"E

CURVE DATA BLOCK 181  
LOT 19

A	115.00'	N73°15'30"E
B	100.00'	N73°15'30"E
C	115.00'	N73°15'30"E
D	100.00'	N73°15'30"E
E	115.00'	N73°15'30"E
F	100.00'	N73°15'30"E
G	115.00'	N73°15'30"E
H	100.00'	N73°15'30"E
I	115.00'	N73°15'30"E
J	100.00'	N73°15'30"E



Road is a part of this Subdivision

NOT A PART OF THIS SUBDIVISION

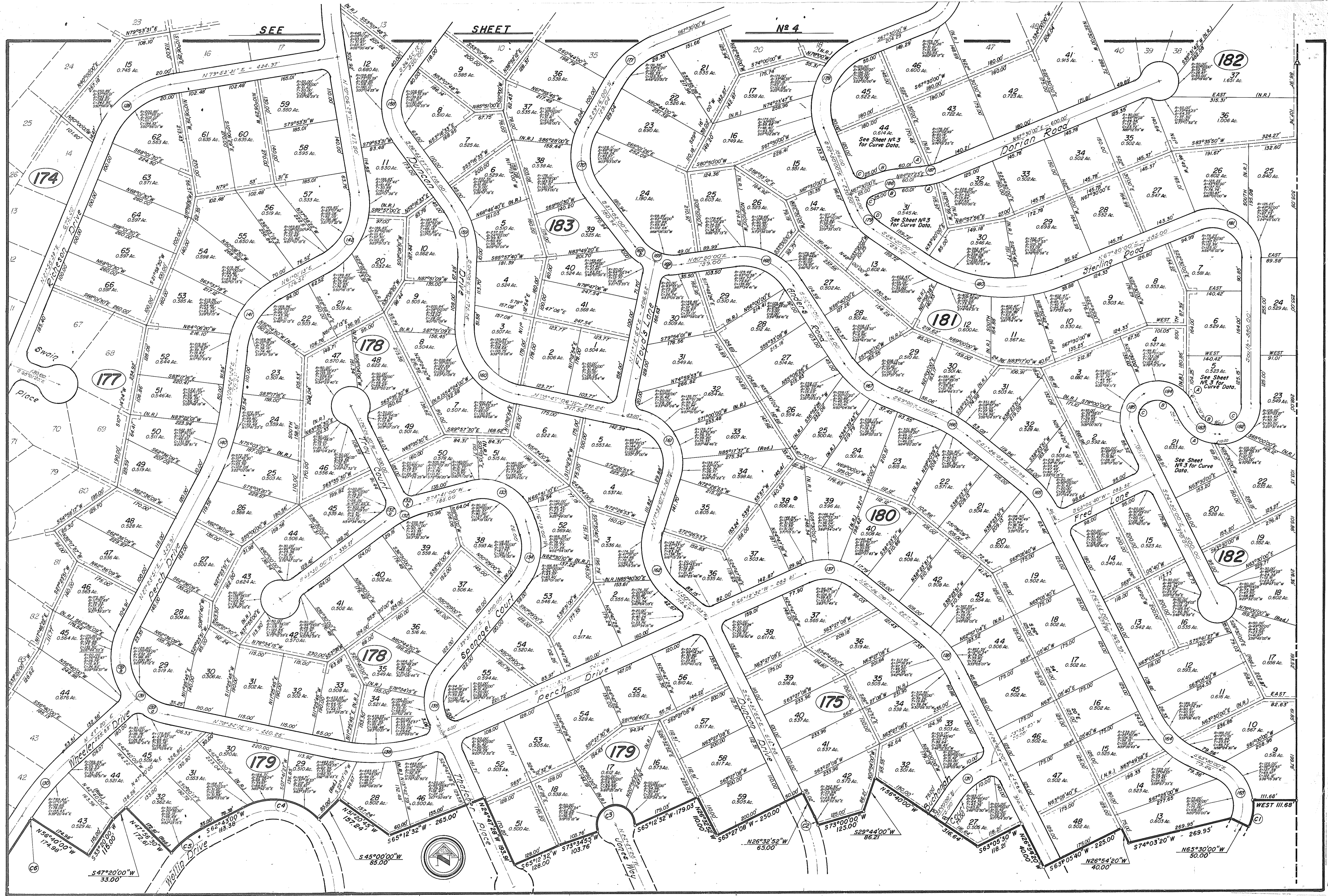
Road is a part of this Subdivision

NOT A PART OF THIS SUBDIVISION

LOT 63 of BLOCK 182 DOES NOT EXIST

LOTS 1, 2, 3, 43 and 44 of BLOCK 187 DO NOT EXIST

TIMBERON SUB #17  
BK33 PG 20-21 40F6



SEE

SHEET

№ 4

182

174

183

181

178

180

182

178

179

175

182

TIMBERON SUB #17  
BK 33 PG22-23 50F6

