

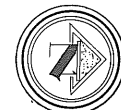
**TIMBERON SUBDIVISION
UNIT - 13**

PORTION OF SECTIONS 24 and 25
T-19-S, R-12-E, N.M.P.M.
OTERO COUNTY, NEW MEXICO
Scale: 1" = 100' February 27, 1985

STATE OF NEW MEXICO)
OTERO COUNTY)
FILED FOR RECORD IN MY OFFICE)
BY)
1030 A)
33)
42-45)
Andrew C. Chapman)
Surveyor)
1296

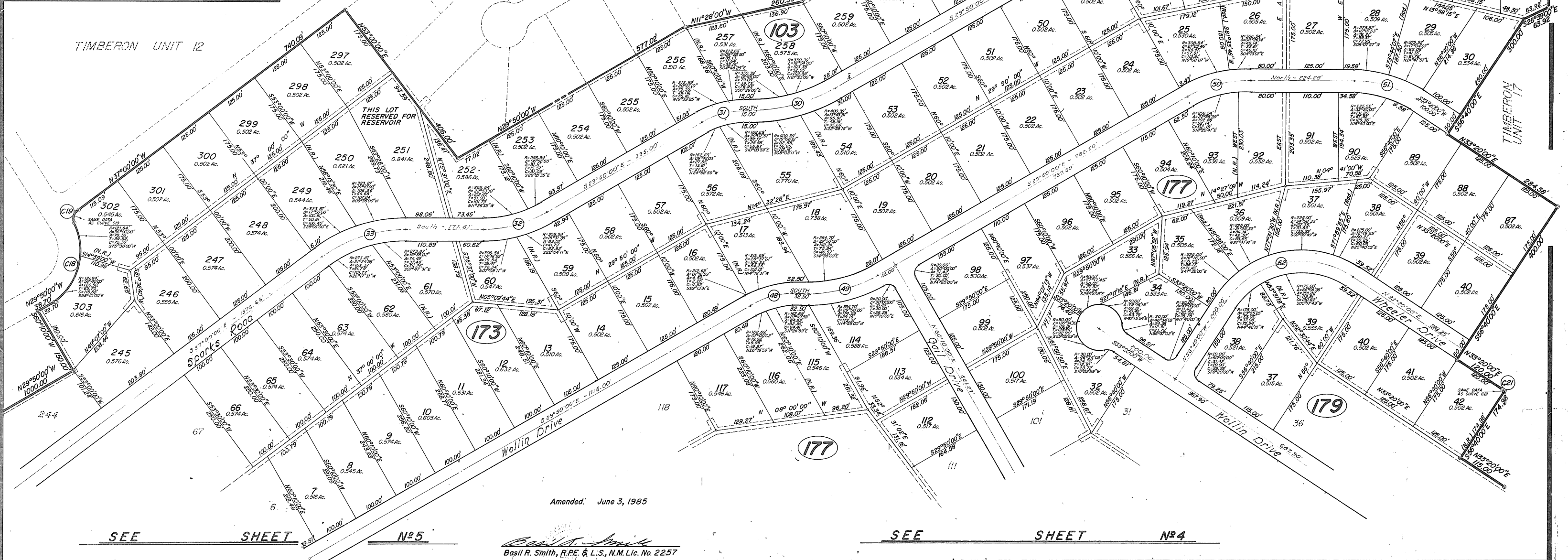
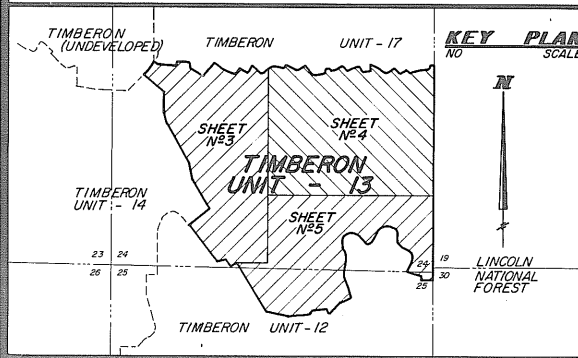
CURVE	DATA
LOT 28	BLOCK 175
A	125.00'
B	125.00'
C	125.00'
D	125.00'
E	125.00'
F	125.00'
G	125.00'
H	125.00'
I	125.00'
J	125.00'
K	125.00'
L	125.00'
M	125.00'
N	125.00'
O	125.00'
P	125.00'
Q	125.00'
R	125.00'
S	125.00'
T	125.00'
U	125.00'
V	125.00'
W	125.00'
X	125.00'
Y	125.00'
Z	125.00'

See Plat Sheet N-4.



NOTE: Be aware of the
NORTH Orientation
of this Sheet.

TIMBERON UNIT 14



Amended: June 3, 1985

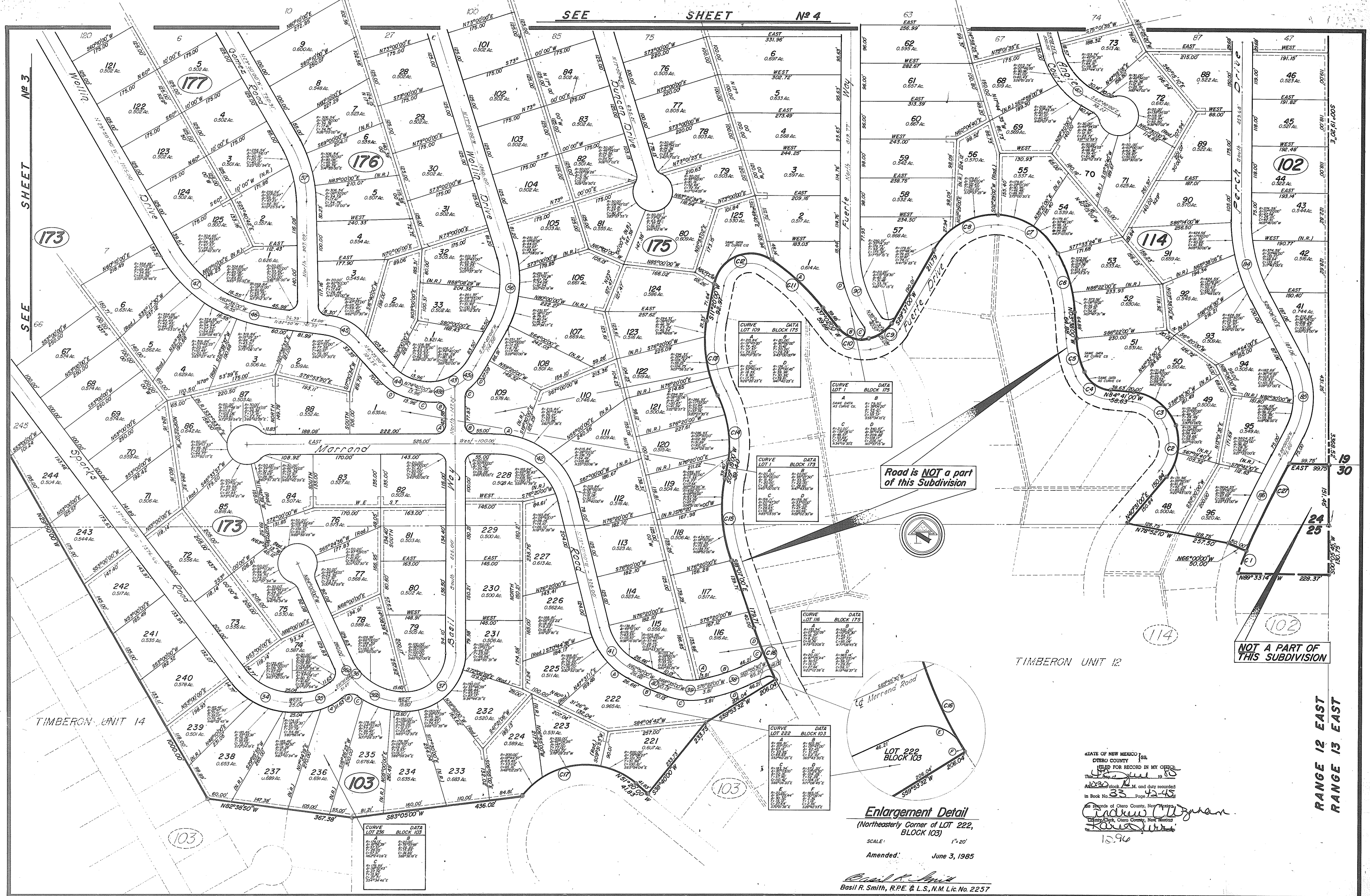
SEE SHEET

N^o 5

Basil R. Smith, R.P.E. & L.S., N.M. Lic. No. 2257

SEE SHEET

N^o 4



CURVE LOT 109 BLOCK 175

DATA	A	B	C	D
1	109.00'	109.00'	109.00'	109.00'
2	109.00'	109.00'	109.00'	109.00'
3	109.00'	109.00'	109.00'	109.00'
4	109.00'	109.00'	109.00'	109.00'

CURVE LOT 175

DATA	A	B	C	D
1	175.00'	175.00'	175.00'	175.00'
2	175.00'	175.00'	175.00'	175.00'
3	175.00'	175.00'	175.00'	175.00'
4	175.00'	175.00'	175.00'	175.00'

CURVE LOT 173

DATA	A	B	C	D
1	173.00'	173.00'	173.00'	173.00'
2	173.00'	173.00'	173.00'	173.00'
3	173.00'	173.00'	173.00'	173.00'
4	173.00'	173.00'	173.00'	173.00'

CURVE LOT 175

DATA	A	B	C	D
1	175.00'	175.00'	175.00'	175.00'
2	175.00'	175.00'	175.00'	175.00'
3	175.00'	175.00'	175.00'	175.00'
4	175.00'	175.00'	175.00'	175.00'

CURVE LOT 222 BLOCK 103

DATA	A	B	C	D
1	222.00'	222.00'	222.00'	222.00'
2	222.00'	222.00'	222.00'	222.00'
3	222.00'	222.00'	222.00'	222.00'
4	222.00'	222.00'	222.00'	222.00'

Road is NOT a part of this Subdivision



NOT A PART OF THIS SUBDIVISION

TIMBERON UNIT 12

TIMBERON UNIT 14

RANGE 12 EAST
RANGE 13 EAST

Enlargement Detail
(Northeasterly Corner of LOT 222, BLOCK 103)

SCALE: 1" = 20'
Amended: June 3, 1985

Basil R. Smith
Basil R. Smith, R.P.E. & L.S., N.M. Lic. No. 2257

STATE OF NEW MEXICO)
 CIERO COUNTY)
 FILED FOR RECORD IN MY OFFICE)
 THIS 19th day of June 1985)
 At 10:30 o'clock A.M. and duly recorded)
 in Book No. 33 Page 42-43)
 the Records of Cero County, New Mexico)
 County Clerk, Cero County, New Mexico)
Karen J. ...
 1290

TIMBERON SUB #13 AMENDED
BK 33 PG 44-45
2 OF 2