



# TIMBERON SUBDIVISION

## UNIT -12

PORTION OF SECTIONS 24 & 25,  
T-19-S, R-12-E, N.M.P.M  
OTERO COUNTY, NEW MEXICO

SCALE: 1" = 100' DATE: FEB. 5, 1973

"STATE OF NEW MEXICO  
COUNTY OF OTERO

I, Frankie Cleary, County Clerk do hereby  
certify the foregoing to be a true and correct copy of the  
original filed in my office the 7 day of February,  
1973 in Plat Book 16 Page 37-40  
WITNESS my hand and the seal of my said office this  
7<sup>th</sup> day of February, 1973

By Frankie Cleary  
County Clerk  
Deputy

### BLOCK-103

PARK

PARK  
209  
17.858 Ac.

### SALMON

### BLOCK-103

### TROUT

### BLOCK-113

### MACKEREL

### MARLIN

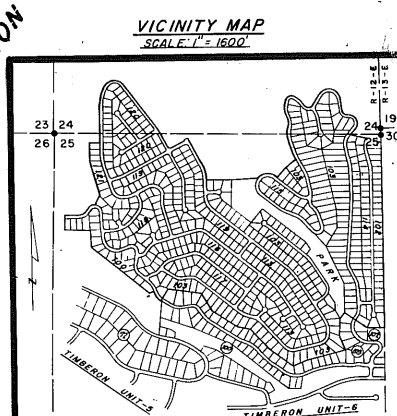
### BLOCK-117

### TROUT

### BLOCK-103

### BLOCK-103

BASIL SMITH ENGINEERING CO.-EL PASO, TEXAS



Note:  
All Utility Easements  
Are 10' Wide Unless  
Otherwise Indicated

Sheet No. One

TIMBERON SUB #12  
BK 16 PG 39-40 2 OF 6

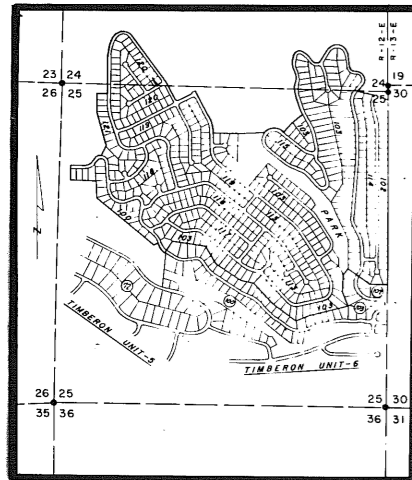
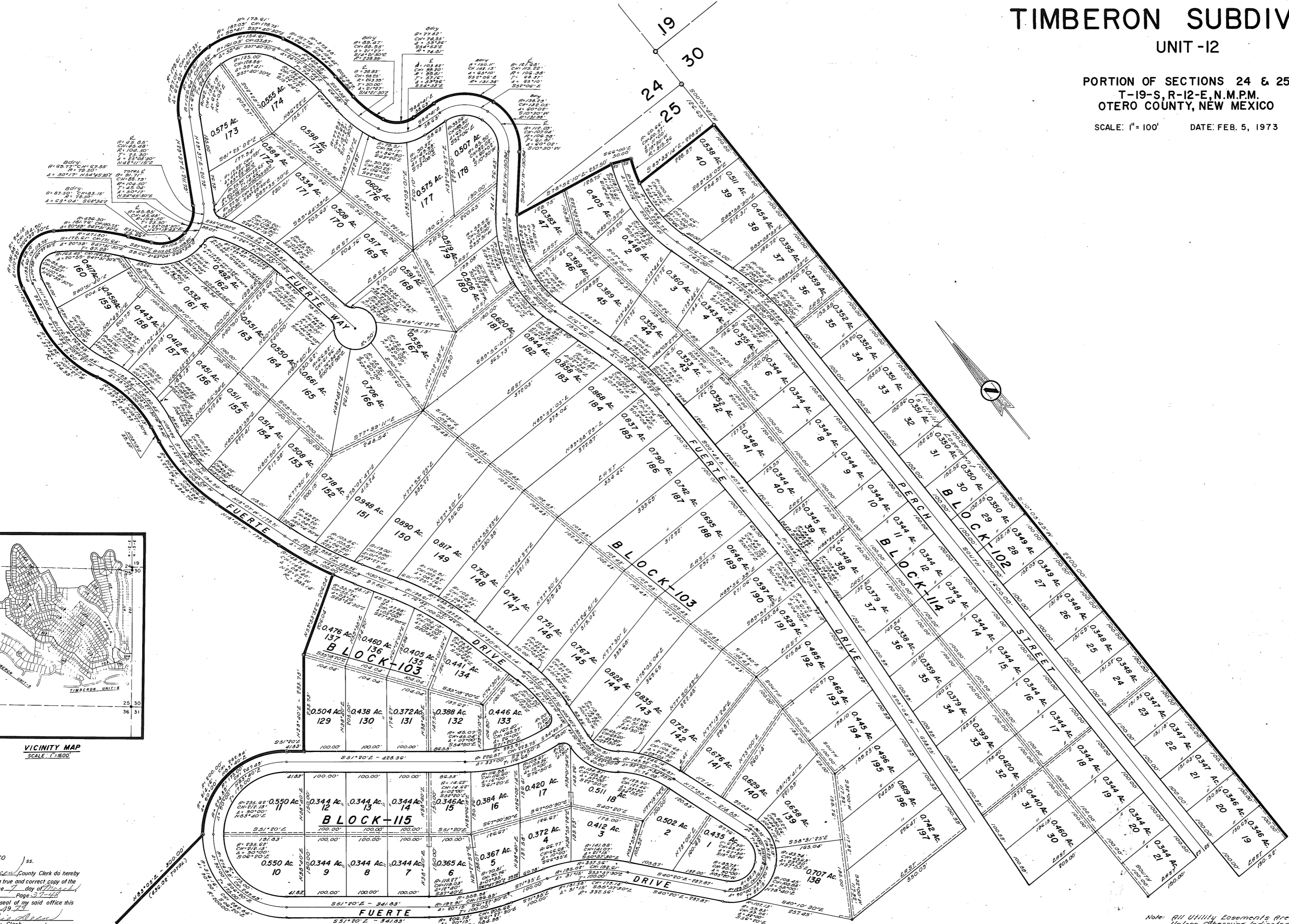
2 OF 6

# TIMBERON SUBDIVISION

UNIT -12

PORTION OF SECTIONS 24 & 25,  
T-19-S, R-12-E, N.M.P.M.  
OTERO COUNTY, NEW MEXICO

SCALE: 1" = 100'      DATE: FEB. 5, 1973



VICINITY MAP  
SCALE: 1" = 800'

"STATE OF NEW MEXICO  
COUNTY OF OTERO  
I, Franklin A. Allen, County Clerk do hereby  
certify the foregoing to be a true and correct copy of the  
original filed in my office the 7 day of February,  
1973, in Plot Book 16, Page 37-115.  
WITNESS my hand and the seal of my said office this  
day of February, 1973.  
Franklin A. Allen  
County Clerk  
By Colby Keith Denton  
Deputy

BASIL SMITH ENGINEERING CO. - EL PASO, TEXAS

Note: All Utility Easements are 10' Wide  
Unless Otherwise Indicated.

Sheet No. Two

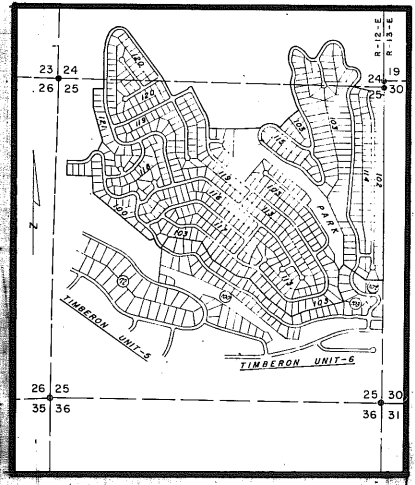
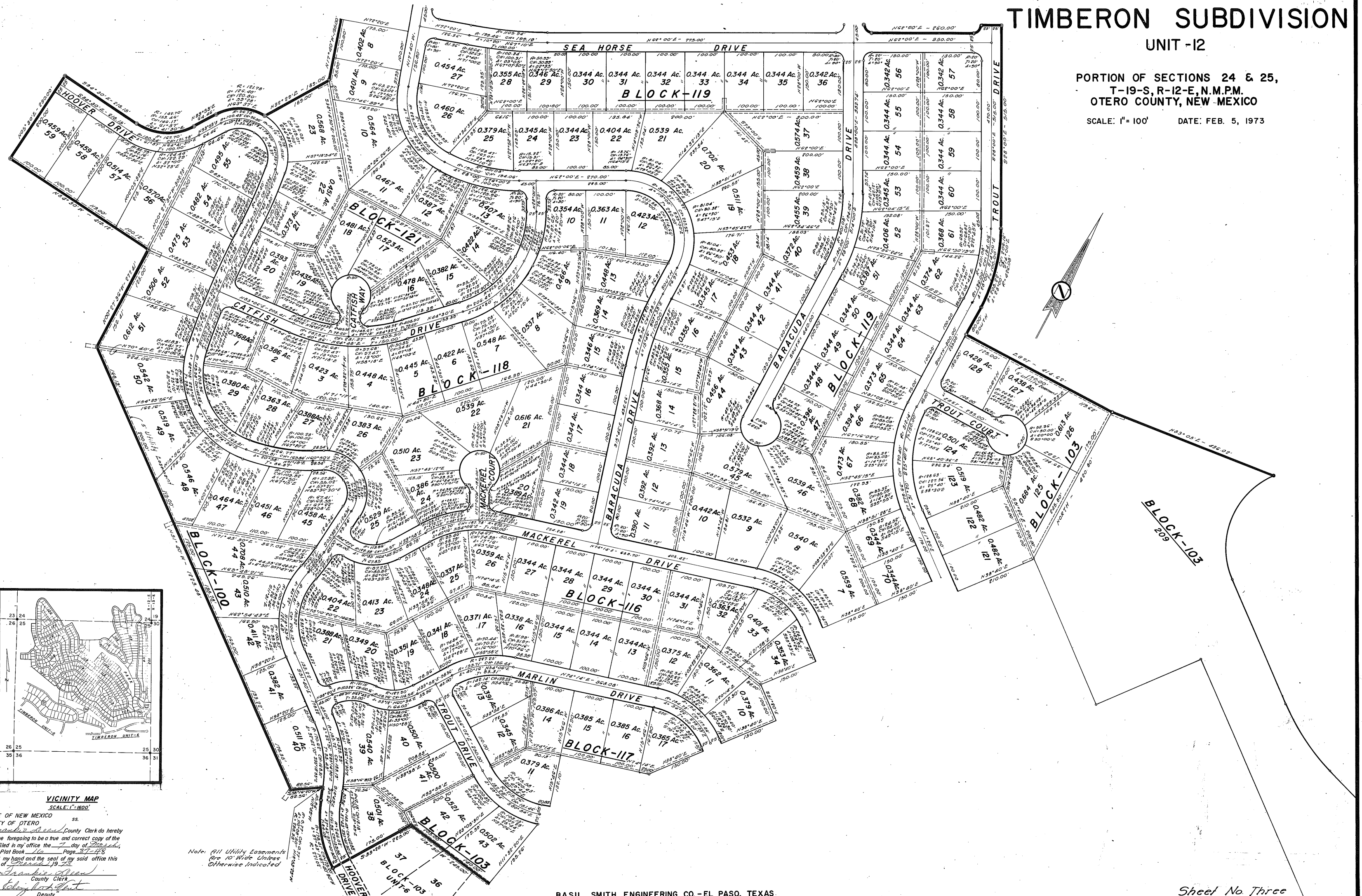
TIMBERON SUB #12  
BK 16 PG 41-42 - 3 OF 6

# TIMBERON SUBDIVISION

UNIT -12

PORTION OF SECTIONS 24 & 25,  
T-19-S, R-12-E, N.M.P.M.  
OTERO COUNTY, NEW MEXICO

SCALE: 1" = 100' DATE: FEB. 5, 1973



VICINITY MAP  
SCALE: 1" = 1600'

STATE OF NEW MEXICO  
COUNTY OF OTERO ss.  
I, Frankie Allen, County Clerk do hereby  
certify the foregoing to be a true and correct copy of the  
original filed in my office the 7 day of March,  
1973, in Plot Book 16 Page 37-48  
WITNESS my hand and the seal of my said office this  
7 day of March, 1973.

Frankie Allen  
County Clerk

By Colony West  
Deputy

Note: All Utility Easements  
Are 10' Wide Unless  
Otherwise Indicated

BASIL SMITH ENGINEERING CO. - EL PASO, TEXAS

Sheet No Three

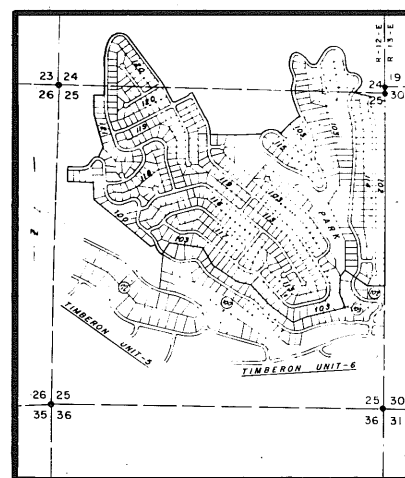
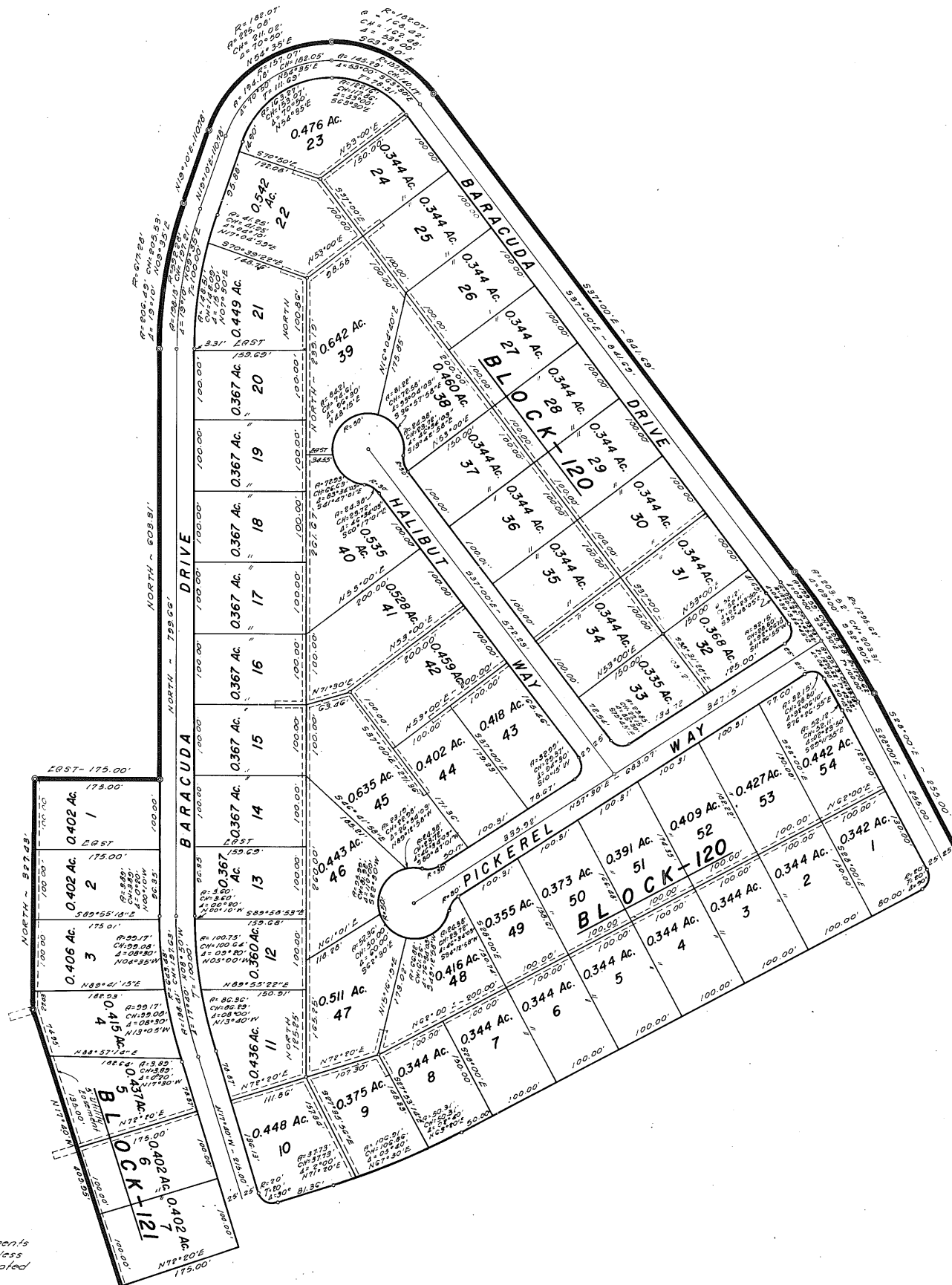
TIMBERON SUB #12  
BK 16 PG 43-44  
4 OF 6

# TIMBERON SUBDIVISION

UNIT -12

PORTION OF SECTIONS 24 & 25,  
T-19-S, R-12-E, N.M.P.M.  
OTERO COUNTY, NEW MEXICO

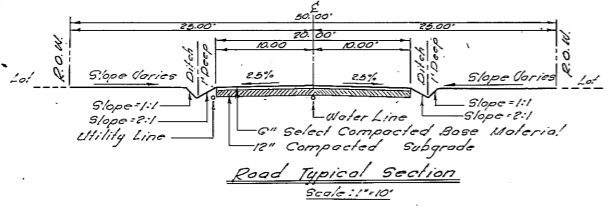
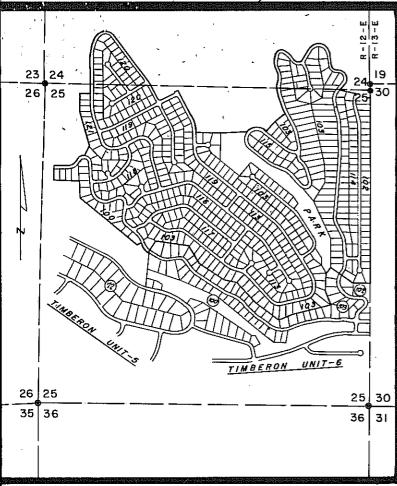
SCALE: 1" = 100' DATE: FEB. 5, 1973



VICINITY MAP  
SCALE: 1" = 1600'

"STATE OF NEW MEXICO  
COUNTY OF OTERO  
I, Frank J. Allen County Clerk do hereby  
certify the foregoing to be a true and correct copy of the  
original filed in my office the 7 day of February  
1973, in Plot Book 16 Page 37-48  
WITNESS my hand and the seal of my said office this  
7 day of February, 1973  
Frank J. Allen  
County Clerk  
By Colony West  
Deputy

Note: All Utility Easements  
Are 10' Wide Unless  
Otherwise Indicated



# TIMBERON SUBDIVISION

## UNIT-12

614 LOTS — CONTAINING 330.500 ACRES  
 PORTION OF SECTIONS 24 & 25,  
 T-19-S, R-12-E, N.M.P.M.  
 OTERO COUNTY, NEW MEXICO

SCALE: 1" = 200' DATE: FEB. 5, 1973

**Dedication**  
 State of New Mexico  
 County of Otero  
 This is to certify that the above Plot of Blocks 100, 102, 103, 104, 105, 106, 107, 108, 109, 110, 111, 112, 113, 114, 115, 116, 117, 118, 119, 120, Unit 12, Timberon Subdivision, a Subdivision in Otero County, New Mexico, is made with the free consent and in accordance with the desires of the undersigned owners and proprietors thereof who by the filing of this Plat to have dedicated to the use of the Public the Roadways, Parking Areas, Parks and Utility easements shown thereon.  
 In witness whereof said owners and proprietors have set their hands and seals this 12th day of FEB. 1973.  
 North American Land Development's Inc.

By: Johnny F. Mobley  
 President, Johnny F. Mobley  
 Richard A. Parsons  
 Assistant Secretary-Treasurer, Richard A. Parsons

**Acknowledgement**  
 State of New Mexico  
 County of Otero  
 The foregoing instrument was acknowledged before me by Johnny F. Mobley and Richard A. Parsons, being the President and Assistant Secretary-Treasurer respectively of North American Land Development's Inc. in behalf of said Inc. on this 12th day of FEBRUARY 1973.

Notary Public  
 My Commission expires 9-30-76

**Filing**  
 State of New Mexico  
 County of Otero  
 Filed for Record in the Office of County Clerk and Recorder of the County of Otero, New Mexico, at 4:30 p.m., this 7th day of March 1973.

By: Elizabeth Hart  
 Deputy  
 Frankie Reed  
 County Clerk  
 Reception No. 93670 66-16 Pg. 27-48  
 APPROVED

State of New Mexico  
 County of Otero  
 This Plat of Blocks 100, 102, 103, 104, 105, 106, 107, 108, 109, 110, 111, 112, 113, 114, 115, 116, 117, 118, 119, 120 of Unit 12, Timberon Subdivision was approved by the Otero County Commission on this 5th day of March 1973.

Jan E. Under  
 Chairman  
 Frankie Reed  
 County Clerk  
 Engineer's Certificate

A Basil R. Smith, Registered Professional Civil Engineer and Land Surveyor, certify this to be a true and correct copy of the original filed in my office on the 7th day of March 1973, in Plat Book 16, Page 27-48.

WITNESS my hand and the seal of my said office this 7th day of March 1973.

Frankie Reed  
 County Clerk

Developer hereby agrees to construct at his own expense all roads in this Subdivision including but not limited to grading, drainage, base course, culverts and bridges.

Restrictive Covenants applicable to this Subdivision are recited in Book 27, Page 27-48 of the records of Otero County.

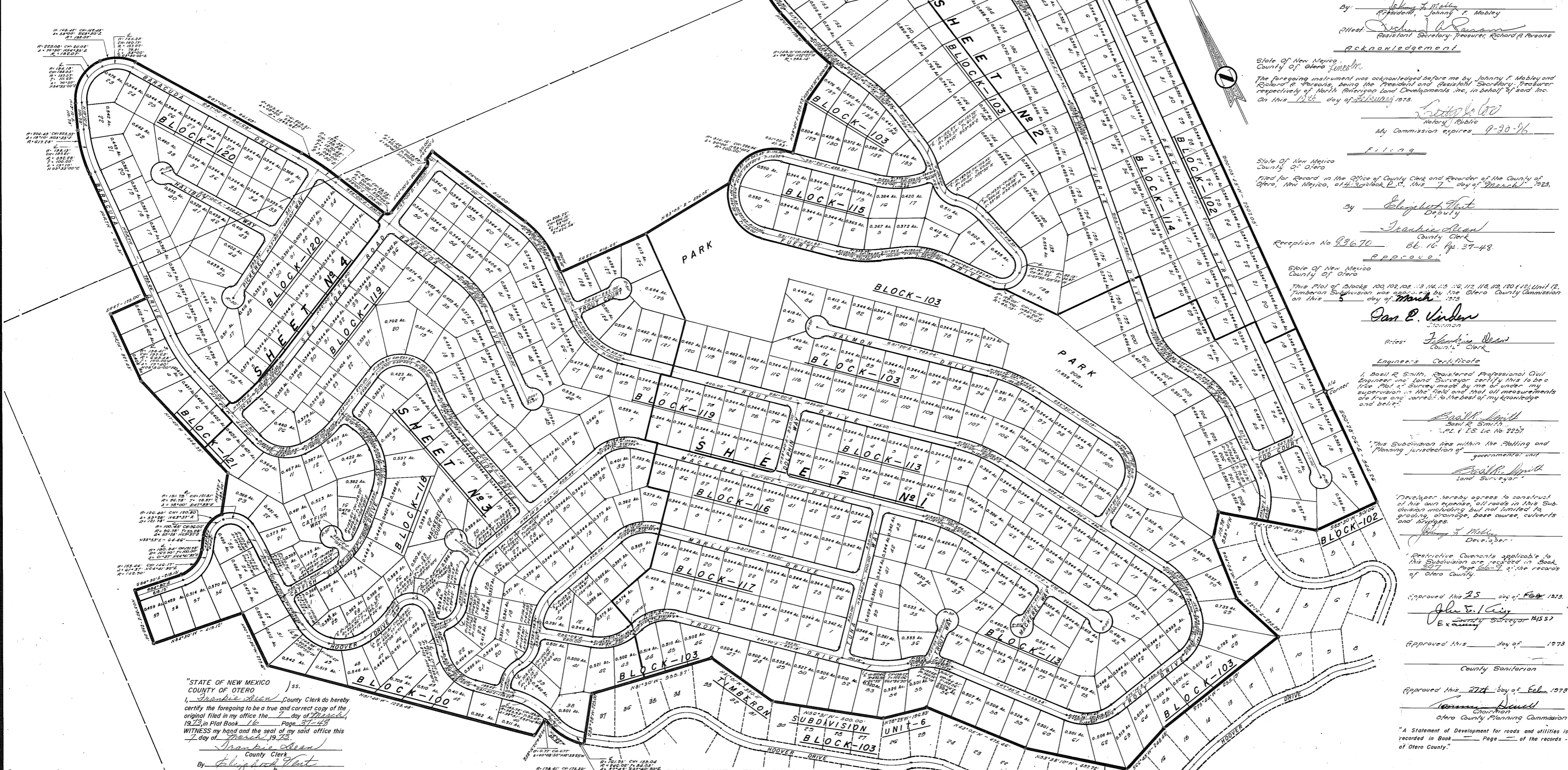
Approved this 25th day of Feb. 1973.  
 John E. Craig  
 County Surveyor #1557

Approved this 27th day of Feb. 1973  
 County Sanitarian

Approved this 27th day of Feb. 1973  
 Chairman  
 Otero County Planning Commission

A Statement of Development for roads and utilities is recorded in Book 27, Page 27-48 of the records of Otero County.

VICINITY MAP  
 SCALE: 1" = 1600'



"STATE OF NEW MEXICO  
 COUNTY OF OTERO  
 I, Frankie Reed, County Clerk do hereby certify the foregoing to be a true and correct copy of the original filed in my office the 7th day of March 1973, in Plat Book 16, Page 27-48.  
 WITNESS my hand and the seal of my said office this 7th day of March 1973.  
 Frankie Reed  
 County Clerk  
 Elizabeth Hart  
 Deputy