

**SACRAMENTO RIVER ESTATES**  
**UNIT ONE**  
 CONTAINING 20.000 ACRES  
 PORTION OF SECTIONS 22 & 23, T-19-S, R-12-E, N.M.P.M.  
 OTERO COUNTY, NEW MEXICO

Property Description

BEING the description of a parcel of land to be known hereafter as Sacramento River Estates, Unit One, lying in and being a portion of Sections 23 and 26, Township 19 South, Range 12 East, New Mexico Principal Meridian, Otero County, New Mexico and being more particularly described by metes and bounds as follows:

BEGINNING at the corner common to Sections 22, 23, 27 and 26, Township 19 South, Range 12 East, New Mexico Principal Meridian, Otero County, New Mexico; thence South 86°34'05" East a distance of 1543.07 feet to a point in the Northeastly Right-Of-Way line of Sacramento Drive (50 foot wide), said point being the true Point of Beginning of the parcel being described;

THENCE North 53°28'55" East a distance of 42.06 feet to a point lying in the South-westerly side of Sacramento River; the following 14 calls are along said Southwesterly side of Sacramento River;

- THENCE South 01°58'35" East a distance of 142.63 feet to a point;
- THENCE South 57°02'05" East a distance of 68.50 feet to a point;
- THENCE South 30°42'35" East a distance of 152.32 feet to a point;
- THENCE South 06°25'05" East a distance of 152.43 feet to a point;
- THENCE South 44°05'35" East a distance of 173.52 feet to a point;
- THENCE South 73°21'05" East a distance of 73.68 feet to a point;
- THENCE South 29°01'05" East a distance of 183.00 feet to a point;
- THENCE South 65°08'05" East a distance of 66.20 feet to a point;
- THENCE South 02°38'05" East a distance of 142.16 feet to a point;
- THENCE South 53°54'35" East a distance of 251.06 feet to a point;
- THENCE South 21°34'00" East a distance of 85.52 feet to a point;

- THENCE South 58°48'30" East a distance of 284.70 feet to a point;
- THENCE South 49°04'00" East a distance of 375.00 feet to a point;
- THENCE South 53°00'00" East a distance of 437.21 feet to a point;
- THENCE South 40°56'00" West a distance of 299.13 feet to a point on the Northeastly Right-Of-Way line of Sacramento Drive;
- THENCE North 49°04'00" West a distance of 237.30 feet along said Right-Of-Way line to a point;
- THENCE a distance of 404.29 feet along said Right-Of-Way line and along the arc of a curve to the left, whose radius is 822.34 feet, whose central angle is 27°30'00", and whose long chord bears North 62°49'00" West a distance of 400.43 feet to a point;
- THENCE North 76°34'00" West a distance of 200.00 feet along said Right-Of-Way line to a point;
- THENCE a distance of 344.81 feet along said Right-Of-Way line and along the arc of a curve to the right, whose radius is 352.20 feet, whose central angle is 55°00'00", and whose long chord bears North 49°04'00" West a distance of 331.72 feet to a point;
- THENCE North 21°34'00" West a distance of 150.00 feet along said Right-Of-Way line to a point;
- THENCE a distance of 404.25 feet along said Right-Of-Way line and along the arc of a curve to the left, whose radius is 1542.15 feet, whose central angle is 14°57'05", and whose long chord bears North 29°02'33" West a distance of 403.11 feet to a point;
- THENCE North 36°31'05" West a distance of 891.10 feet along said Right-Of-Way line to the Point of Beginning of the parcel herein described and containing 20.000 Acres of ground more or less.

Dedication

STATE OF NEW MEXICO ) ss.  
 COUNTY OF OTERO )  
 This is to certify that the above Plot of Blocks 1 and 2, Unit One, Sacramento River Estates, a Subdivision, in Otero County, New Mexico, is made with the free consent and in accordance with the desires of the undersigned owners and proprietors thereof, who by the filing of this Plot do hereby dedicate to the use of the Public the Roadways, Parking Areas, Parks and Utility Easements shown hereon.  
 In witness whereof said owners and proprietors have set their hands and seals this 17<sup>th</sup> day of ~~January~~ May, 1976.  
 Sacramento River Estates  
 Thomas W. Ross  
 Robert K. Sale

Acknowledgement

STATE OF TEXAS ) ss.  
 COUNTY OF HONOR )  
 The foregoing instrument was acknowledged to me by Thomas W. Ross and Robert K. Sale, partners on behalf of Sacramento River Estates, a partnership, on this 17<sup>th</sup> day of May, 1976.  
 Witness  
 Notary Public  
 My Commission expires 6-1-1975

Filing

STATE OF NEW MEXICO ) ss.  
 COUNTY OF OTERO )  
 I hereby certify that this instrument was filed for Record on the 15<sup>th</sup> day of May, 1976, at 10:00 A.M. and duly recorded in Book 424 Page 416-419 of the records of Otero County.  
 By: Frankie Dean Deputy County Clerk

Approval

STATE OF NEW MEXICO ) ss.  
 COUNTY OF OTERO )  
 This Plot of Blocks 1 and 2, Unit One, Sacramento River Estates was approved by the Otero County Commission on this 17<sup>th</sup> day of May, 1976.  
 Mayor Frankie Dean Chairman  
 Attest: Frankie Dean County Clerk

Engineer's Certificate

I, Basil R. Smith, Registered Professional Civil Engineer and Land Surveyor, certify this to be a true Plot of Subdivisions made by me or under my supervision in the field and that all data are true and correct to the best of my knowledge and belief.  
 Basil R. Smith, R.E., P.L.S., N.M. Reg. Lic. No. 8257  
 This Subdivision lies within the Platting and Planning jurisdiction of Otero County, and is subject to the New Mexico Subdivision Act.  
 By: Frankie Dean Deputy County Clerk

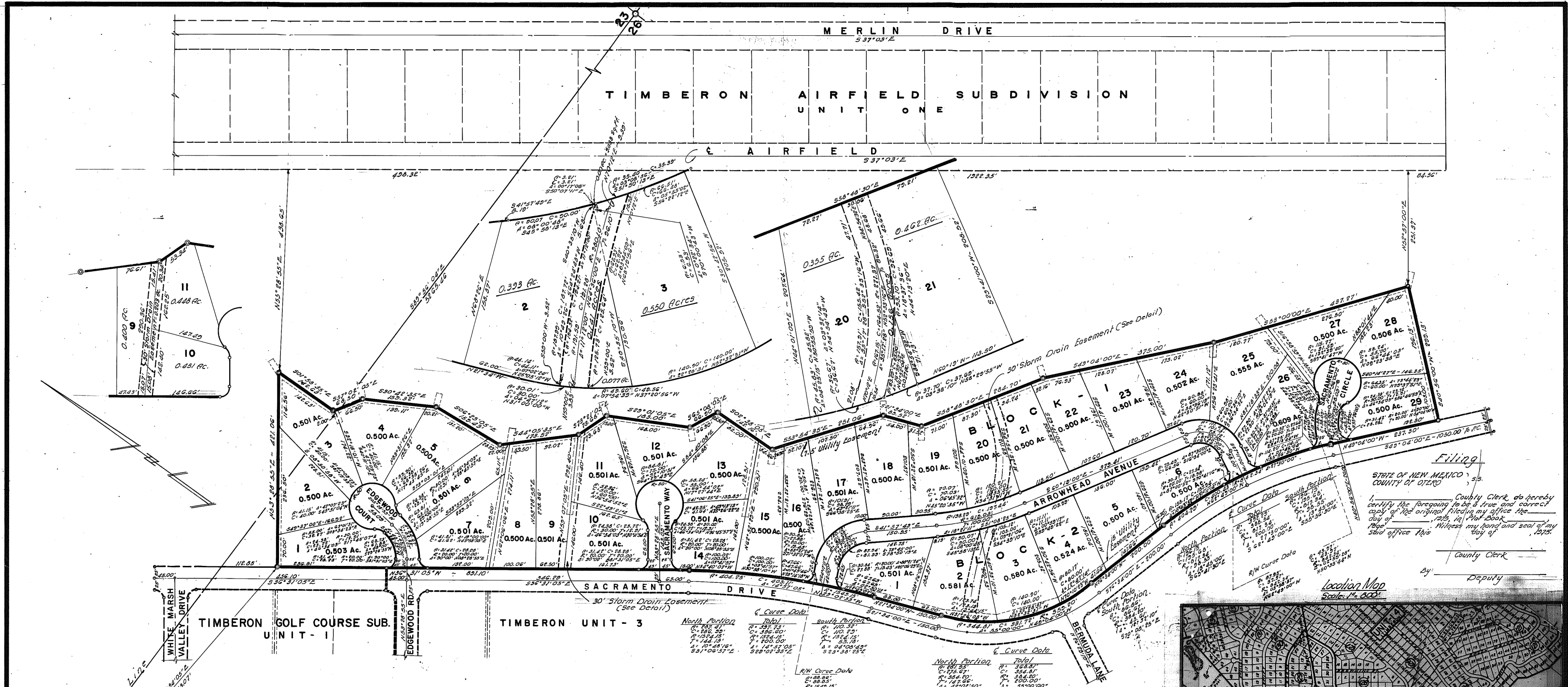
The Developer hereby agrees to construct at his own expense, all roads in this Subdivision including but not limited to, grading, drainage, base course, curbs and sidewalks.  
 Thomas W. Ross - Robert K. Sale  
 Developers

The Restrictive Covenants applicable to this Subdivision are recorded in Book 424 Page 416-419 of the records of Otero County.  
 Disclosure Statement as required by the New Mexico Subdivision Act is recorded in Book 424 Page 1651-160 of the records of Otero County.  
 Approved this 15 day of May, 1976

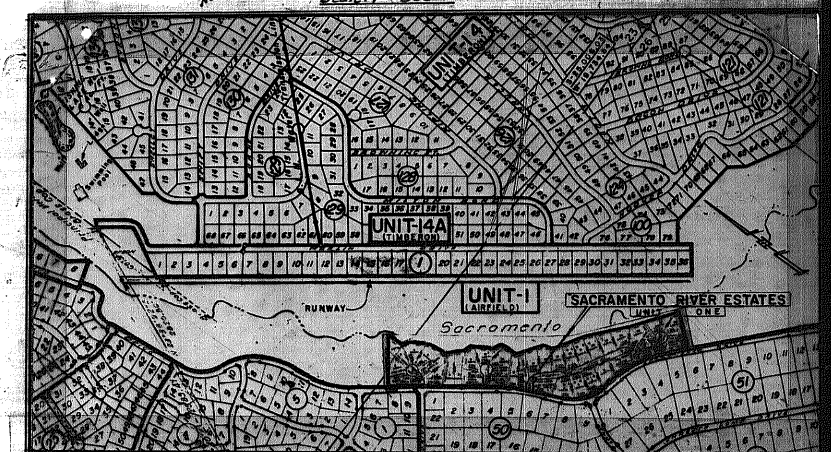
Examining Surveyor N.M. Reg. No. 424  
 Approved this 27 day of April, 1976  
 OTERO COUNTY PLANNING COMMISSION  
 BOARD OF COUNTY COMMISSIONERS  
 OTERO COUNTY, NEW MEXICO  
 Attest: Frankie Dean Secretary  
Frankie Dean Chairman  
 Attest: Frankie Dean County Clerk  
Frankie Dean Chairman

Filing

STATE OF NEW MEXICO ) ss.  
 COUNTY OF OTERO )  
 I, Frankie Dean, County Clerk do hereby certify the foregoing to be a true and correct copy of the original filed in my office the 17<sup>th</sup> day of May, 1976, in Plot Book 424, Page 416-419. Witness my hand and seal of my said office this 17<sup>th</sup> day of May, 1976.  
Frankie Dean  
 County Clerk  
 By: Frankie Dean Deputy



**SACRAMENTO RIVER ESTATES  
UNIT ONE  
CONTAINING 20.000 ACRES  
PORTION OF SECTIONS 23 & 26,  
T-19-S, R-12-E N.M.P.M.  
OTERO COUNTY, NEW MEXICO  
SCALE: 1" = 100' DATE: NOV. 8, 1974**



Dedication

STATE OF NEW MEXICO )  
COUNTY OF OTERO ) ss.  
This is to certify that the above Plat of Blocks 1 and 2, Unit One, Sacramento River Estates, a subdivision in Otero County, New Mexico, is made with the free consent and in accordance with the desires of the undersigned owners and proprietors thereof, who by the filing of this Plat do hereby dedicate to the use of the Public the Roadways, Parking Areas, Parks and Utility Easements shown hereon.

In witness whereof, said owners and proprietors have set their hands and seals this 17th day of January, 1975.

Sacramento River Estates  
Thomas W. Ross  
Thomas W. Ross  
Robert K. Sale  
Robert K. Sale

Acknowledgement

STATE OF TEXAS )  
COUNTY OF HONARD ) ss.  
The foregoing instrument was acknowledged to me by Thomas W. Ross and Robert K. Sale, partners or behalf of Sacramento River Estates, a partnership on this 17th day of January, 1975.

Notary Public W. L. Jones  
My Commission Expires 6-1-1975

Filing

STATE OF NEW MEXICO )  
COUNTY OF OTERO ) ss.  
I hereby certify that this instrument was filed for record on the 17 day of May, 1975, at 10:00 a.m., and duly recorded in Book 20 Page 55 of the records of Otero County.

By Frankie Dean  
Deputy County Clerk

Approval

STATE OF NEW MEXICO )  
COUNTY OF OTERO ) ss.  
This Plat of Blocks 1 and 2, Unit One, Sacramento River Estates was approved by the Otero County Commission on this 15 day of May, 1975.  
Frankie Dean  
Chairman  
Attest: Frankie Dean  
County Clerk

Engineer's Certificate

I, Basil R. Smith, Registered Professional Civil Engineer and Land Surveyor, certify this to be a true Plat of Survey made by me or under my supervision in the field and that all data are true and correct to the best of my knowledge and belief.

Basil R. Smith  
Basil R. Smith, P.E. & L.S., N.M. Reg. No. 2221

By Frankie Dean  
Deputy County Clerk

Filing  
STATE OF NEW MEXICO )  
COUNTY OF OTERO ) ss.  
I, \_\_\_\_\_ County Clerk do hereby certify the foregoing to be a true and correct copy of the original filed in my office the day of \_\_\_\_\_, 1975, in \_\_\_\_\_  
Witness my hand and seal of my said office this \_\_\_\_\_ day of \_\_\_\_\_, 1975.  
\_\_\_\_\_  
County Clerk  
By \_\_\_\_\_ Deputy

Location Map  
Scale: 1" = 500'