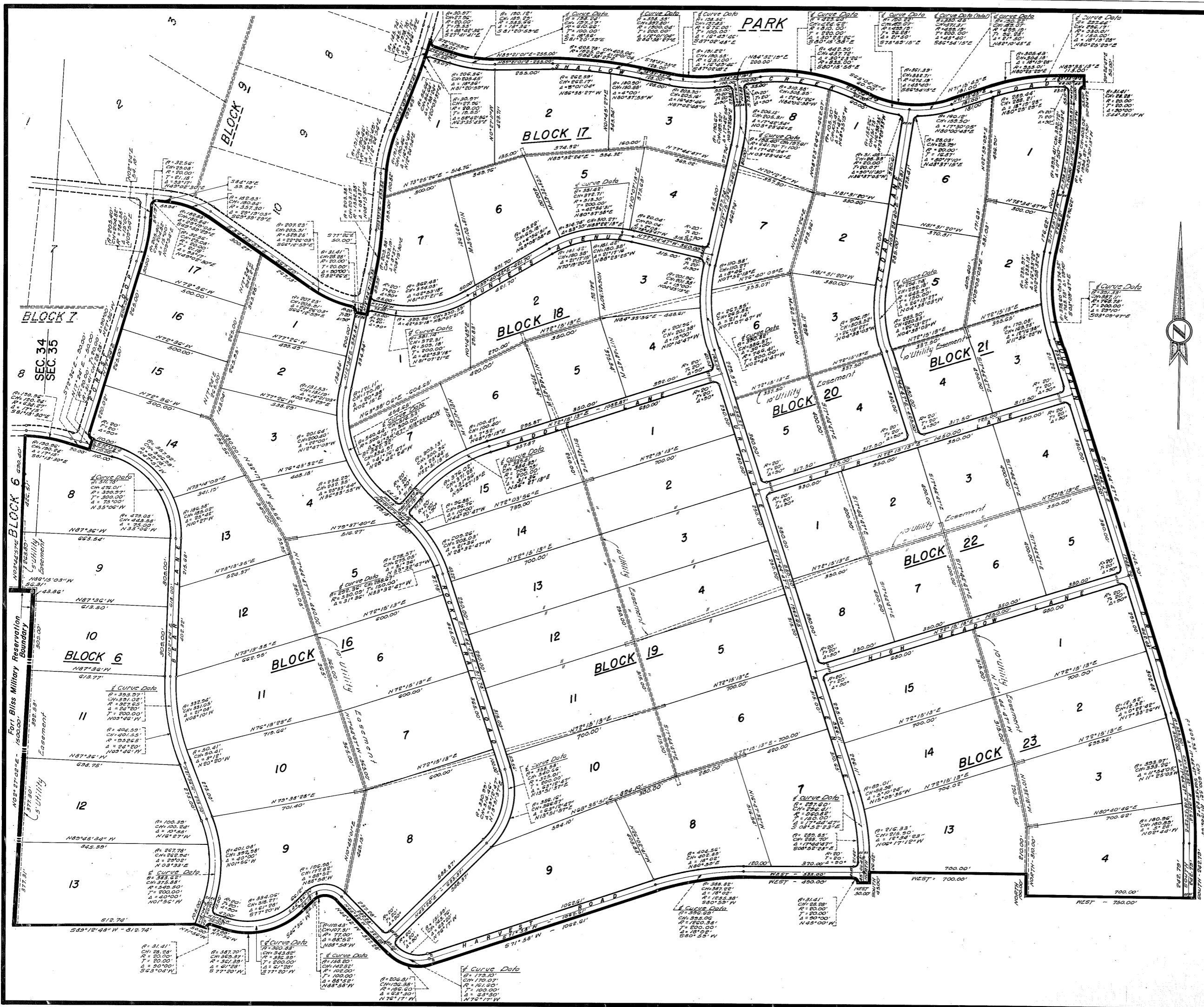


SACRAMENTO MOUNTAIN RANCHES SUBDIVISION

UNIT-4
CONTAINING 378.9025 Ac.
PORTION OF SEC. 34&35, T-19-S, R-12-E, N.M.P.M.
OTERO COUNTY, NEW MEXICO

DATE: OCT. 27, 1969 SCALE 1"=200'



DEDICATION

State of New Mexico
County of Otero

This is to certify that the above Plot of Blks 6, 16, 18, 19, 20, 21, 22 & 23 Unit 4, Sacramento Mountain Ranches Subdivision, of Subdivision in Otero County, New Mexico, is made with the free consent and in accordance with the desires of the undersigned owners and proprietors thereof who by the filing of this Plat, do hereby dedicate to the use of the Public the Roadways, Parking Area, Parks and Utility Easements shown thereon.

In witness whereof, said owners and proprietors have set their hands and seals this 27 day of October, 1969.

North American Developments Incorporated
By: Robert H. Levenson
President, Robert H. Levenson
Attest: Margaretta M. Levenson
Secretary, Margaretta M. Levenson

ACKNOWLEDGEMENT

State of New Mexico
County of Otero

The foregoing instrument was acknowledged before me by Robert H. Levenson and Margaretta M. Levenson, being the President and Secretary respectively of North American Developments, Incorporated on behalf of said Inc.

On this 27 day of October, 1969.

James D. [Signature]
Notary Public

My Commission Expires: March 28 1973

FILING

State of New Mexico
County of Otero

I, filed for record in the office of the County Clerk and Registrar of the County of Otero, New Mexico, at 12:30 o'clock P.M. this 11 day of November, 1969.

By: Keith Roberts
Deputy County Clerk
Reception No. 73-41

State of New Mexico
County of Otero

This Plat of Blocks 6, 16, 18, 19, 20, 21, 22 & 23 Unit 4, Sacramento Mountain Ranches Subdivision was approved by the Otero County Commission on this 27 day of October, 1969.

William F. Hoge Attest: Keith Roberts
Chairman County Clerk

Note: See Page 228-233, Book 325 for Notes and Bounds Description.

Engineer's Certificate

I certify this to be a true Plat of Survey made by me in the field and that all measurements are true and correct to the best of my knowledge and belief.

Basil R. Smith
Basil R. Smith
N.M. Registered Professional Engineer and Land Surveyor

STATE OF NEW MEXICO
COUNTY OF OTERO

Keith Roberts
Deputy County Clerk

Drawn By: H. Sibala

SACRAMENTO MOUNTAIN ESTATES #4
BK 13 PG 38-39