

SACRAMENTO MOUNTAIN RANCHES SUBDIVISION

UNIT-1

CONTAINING 278.1872 AC.

PORTION OF SEC. 27, 28 & 34, T-19-S, R-12-E, N.M.P.M.
OTERO COUNTY, NEW MEXICO

SCALE: 1"=200'

JULY 28, 1969

Dedication

State Of New Mexico
County Of Otero

This is to Certify That The Above Plot Of Blocks 1, 2, 3, 4 & 5, Sacramento Mountain Ranches Subdivision, Unit 1, A Subdivision In Otero County, New Mexico, Is Made With The Free Consent And In Accordance With The Desires Of The Undersigned Owners And Proprietors Thereof, Who, By The Filing Of This Plat, Do, Hereby Dedicate To The Use Of The Public The Roadways, Parking Area, Parks And Utility Easements Shown Thereon.

In Witness Whereof, Said Owners And Proprietors Have Set Their Hands And Seals This 28th Day Of July, 1969.

North American Developments Incorporated

By: Johnny F. Mobley
Vice President, Johnny F. Mobley

Attest: Margaretha M. Levenson
Secretary, Margaretha M. Levenson

Acknowledgement

State Of New Mexico
County Of Otero

The foregoing instrument was acknowledged before me by Johnny F. Mobley and Margaretha M. Levenson, being the Vice President and Secretary respectively, of North American Developments Incorporated on behalf of said Inc.

On the 28th Day Of July, 1969.
M. Sally Smith
Notary Public
My Commission Expires January, 1970

State Of New Mexico
County Of Otero

Filed For Record In The Office Of The County Clerk And Recorder Of The County Of Otero, New Mexico, At 9:55 O'Clock A.M., This 28th Day Of July, 1969.

By: A. Teresa Jorio Deputy
Book 13 Pages 21-22
Ruth Roberts
County Clerk
Reception No. 21711

State Of New Mexico
County Of Otero

This Plat Of Blocks 2, 3, 4 & 5, Sacramento Mountain Ranches Subdivision Was Approved By The Otero County Commission On This 28th Day Of July, 1969.

By: Ray E. Jewker Chairman
Ruth Roberts
County Clerk
By: A. Teresa Jorio, Deputy

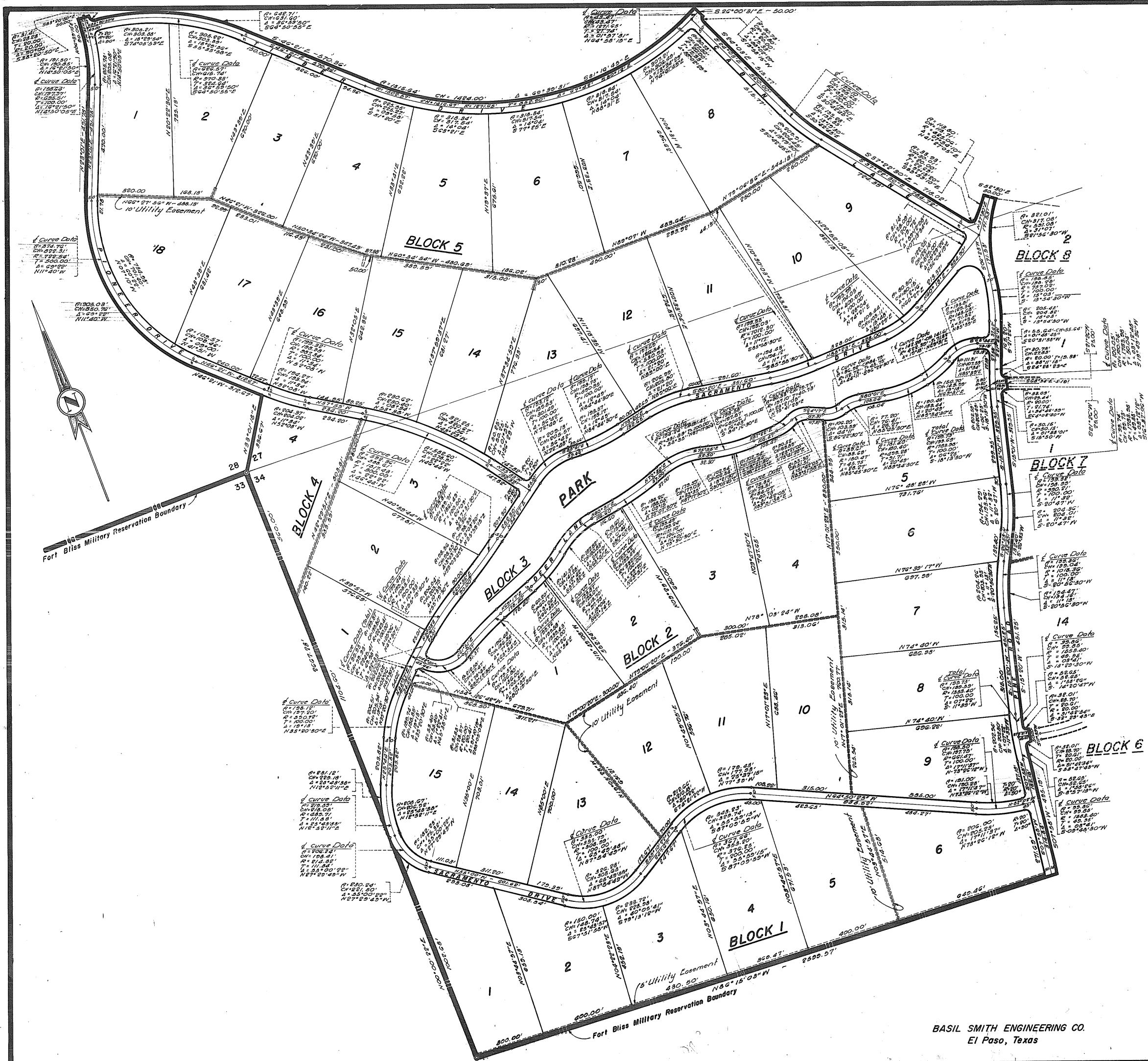
Engineer's Certificate

I, certify this to be a true Plat of Survey Made By Me In The Field and That All Measurements are True and Correct to The Best Of My Knowledge and Belief.

Basil R. Smith
Basil R. Smith,
N.M. Registered Professional Engineer and
Land Surveyor

Bk 13 Pg 21 - 22

Drawn by: H.S. Hale



BASIL SMITH ENGINEERING CO.
El Paso, Texas